






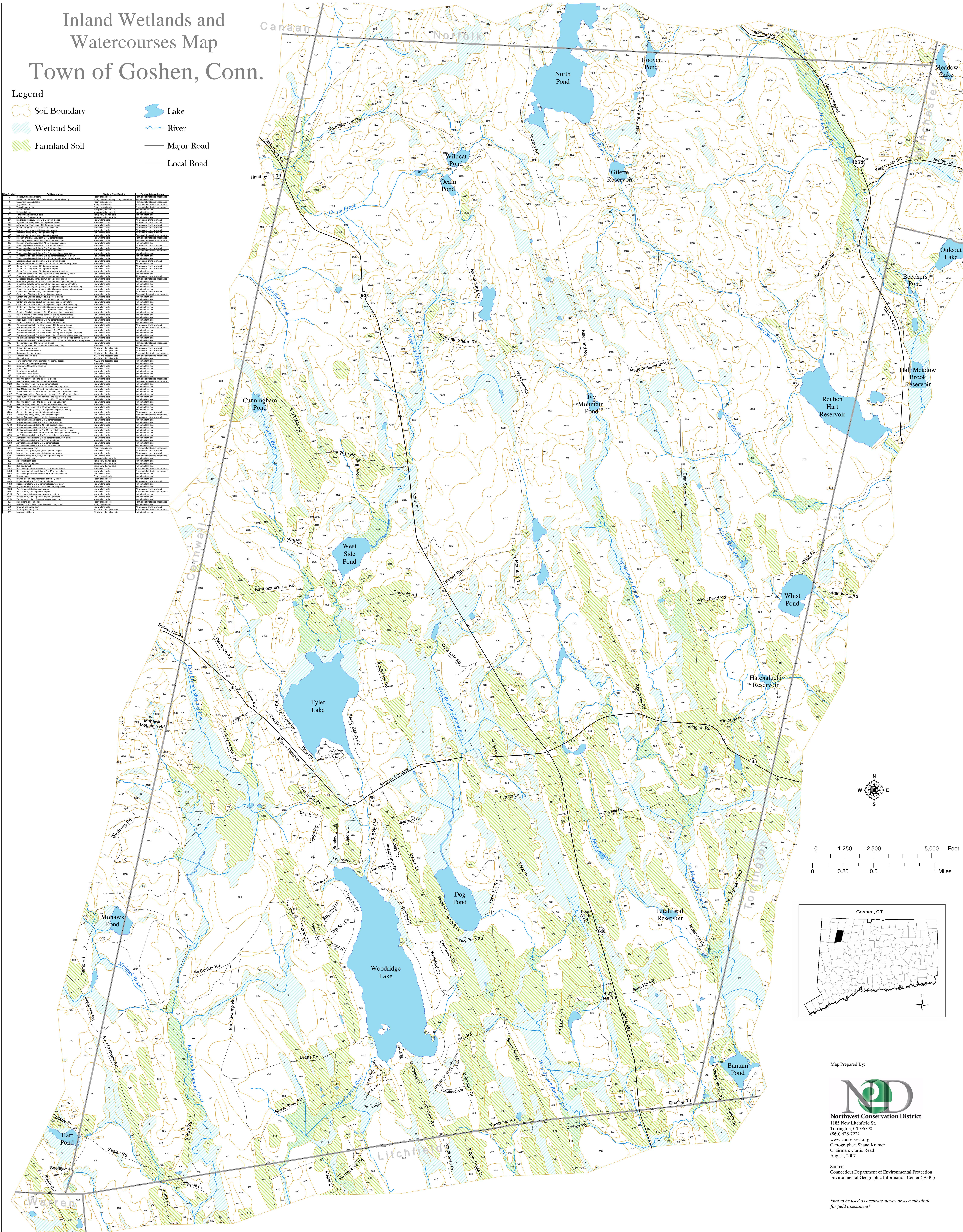


Inland Wetlands and Watercourses Map Town of Goshen, Conn.

Legend

-  Soil Boundary
  Lake
-  Wetland Soil
  River
-  Farmland Soil
  Major Road
-  Local Road

[illegible]

Map Prepared By:



Northwest Conservation District
1185 New Litchfield St.
Torrington, CT 06790
(860) 626-7222
www.conservect.org
Cartographer: Shane Kramer
Chairman: Curtis Read
August, 2007

Source:
Connecticut Department of Environmental Protection
Environmental Geographic Information Center (EGIC)

not to be used as accurate survey or as a substitute for field assessment