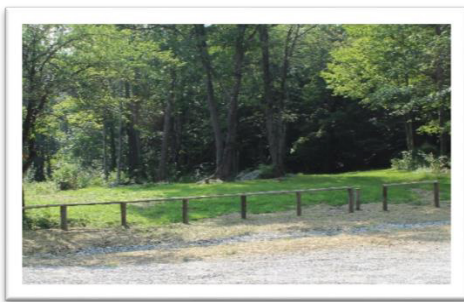


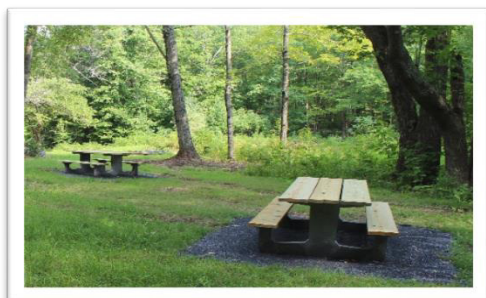


From the First Selectman

It's hard to believe, but with the just concluded Goshen Fair, for most summer is officially over. It won't be long before we will be enjoying the awesome colors of fall and the cooler weather.

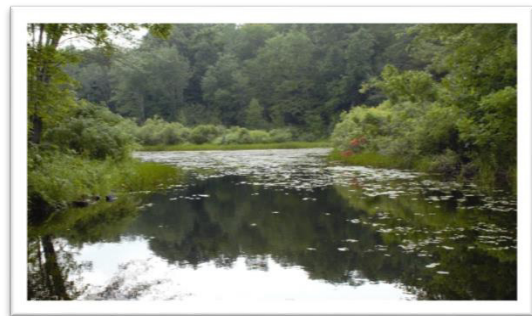


A great opportunity to savor the colors of the season and the nice temperatures would be to visit, picnic or hike the recently purchased town property, 52.43 acres at the end of East Street North adjacent to the 43 acres of property we already owned. The Conservation Commission had previously been busy creating a trail on our 43 acre parcel, which is now connected to our new purchase. Recently Goshen's Public Works department created a new parking area along with a fence and picnic table for people



to enjoy. If you take the opportunity to have a picnic and walk the trail, you will see lots of

birds and wildlife including ducks on the pond near the picnic and parking area. In addition, the newly created Kiosk will have information about the property and various trails. As one walks the trail(s), one will find the information cards describing various spots along the way bringing attention to interesting facts about the wildlife and fauna. Recently, accompanied by my wife and daughter, I walked the trail and can attest to the *great* job done by the Conservation Commission.



Fiscal year 2017-2018 concluded on June 30, 2018, and once again we finished the year in the black. In fact, not only will we not need to use the \$364,540 that was budgeted from Fund Balance, we will *add* an estimated \$190,000 to the Fund Balance. As has been the case in the past, our positive year could not have happened without the great work of all of our boards, commissions and staff. Thank you everyone for another great fiscal year end! Stay safe and enjoy the fall.

Best,

LEGAL NOTICE

Town of Goshen Board of Assessment Appeals September Meeting

All owners of motor vehicles registered in the Town of Goshen are hereby warned that the Board of Assessment Appeals of the Town of Goshen will meet in open session at the Goshen Town Hall on September 15, 2018 at 9:00 a.m. for the sole purpose of hearing appeals related to the assessment of motor vehicles. All persons claiming to be aggrieved by the doings of the assessor of the Town of Goshen with regard to motor vehicle assessments on the Grand List of October 1, 2017 are hereby warned to make their appeal to the Board of Assessment Appeals at this meeting.

Appeal Applications are available in the Assessor's Office. 860-491-2115

Dated at Goshen, Connecticut, this 20th day of August, 2018.

By: _____
Robert Harmon, Chairman

As summer winds down and fall approaches we are putting our thoughts toward Election Day in November.

If you have not registered to vote there are a few ways you can go about doing so.

- You may go on line and visit the SOTS (Secretary of the State) web site and follow the voting link.
- You may come to our office and register in person.
- You may visit the Town Clerk's office and register in person.
- You may register at the DMV when you obtain or renew your driver's license.



We are in need of Election Moderators and Election Workers. If you have an interest, please contact us. These are paid positions.

As a reminder our office hours are the 1st and 3rd Wednesday of each month from 9:00 a.m. to 12:00 p.m.

If you have any questions, concerns or suggestions we would like to hear from you. We can be reached at 860-491-2308 ext. 236.

Nanci Howard & Susan Breakell

Registrars of Voters

GOSHEN ASSESSOR'S OFFICE LISTS PROPERTY TAX EXEMPTIONS

Veterans Exemption: To be eligible for this exemption, the Veteran must have served during a period of war as specified in State Statute 27-103 and file an Honorable Discharge (form DD-214) in the town of residence with the Town Clerk by September 30th. It is only necessary to file once for this exemption. Active duty military personnel are also eligible for this exemption and must file a letter stating active duty status by September 30th each year.

Goshen residents meeting the Basic Veteran's Exemption in accordance with State Statute 12-81(19) may be eligible for an additional assessment exemption if they meet certain income limits. Applications are available from the Assessor's Office and must be filed by October 1st. Once a veteran has been approved for this additional exemption, an application must be submitted every other year.

Active Duty Vehicle Exemption: A Goshen resident who is a member of the armed forces of the United States (including the reserves or Connecticut National Guard) on the October 1 assessment date may be eligible for the total exemption of one motor vehicle which is registered to or leased by the service person. Application is to be filed no later than December 31st following the property tax due date. Annual filing is required.

Disabled Veterans Exemption: To be eligible for this exemption, submit a copy of your Veteran's Disability Rating statement from the Veteran's Administration. Disabled veterans that have established their eligibility for this exemption are no longer required to file annually unless there is a change in the percentage of disability.

Handicapped Equipped Motor Vehicles: A local-option exemption is available with respect to a specially equipped motor vehicle owned by a person with disabilities or owned by the parent or guardian of a person with disabilities.

Exemption for Blindness: To receive a \$3,000 assessment exemption, certification of blindness must be obtained from the State of Connecticut, Board of Education and Services for the Blind. This certificate must be dated and filed with the Assessor by October 1st. It is only necessary to file once for this exemption.

Exemption for Totally Disabled Taxpayers: To receive a \$1,000 assessment exemption, proof of permanent total disability from the Social Security Administration must be presented to the Assessor along with a signed Form D-1 application by October 1st. It is only necessary to file once for this exemption.

Any qualifying exemptions will be applied to following July tax bill.

If further information is needed regarding any exemption, please contact the Assessor's Office at 860-491-2115. The office hours are Tuesday and Wednesday 9:00 to 12:00 and 1:00 to 4:00.

GOSHEN SPECIAL USE ASSESSMENTS

Farm, Forest and Open Space: Owners wishing to classify land as farm, forest or open space should contact the Assessor's Office for details and applications. All applications must be filed with the Assessor's Office between September 1st and October 31st.

THE GOSHEN GOOD NEIGHBOR FUND, INC.

Mission

The Goshen Good Neighbor Fund, Inc. was formally established as a nonprofit 501c (3) corporation in 1977 by a group of Goshen Connecticut residents who came together to raise funds for a Goshen family that was experiencing a financial emergency. Through this small group's efforts, fundraising initiatives, and desire to have funds on hand to assist other residents of Goshen who might find themselves in similar financial emergency circumstances, **The Goshen Good Neighbor Fund, Inc. (GGNF)** has been perpetuated since that time.



The fund is managed by a Board of Directors that operates within the established statement of purpose and the by-laws of the organization. When a request is received and upon approval of a consensus, funds are distributed on a per case basis as needs become known, and are handled expeditiously and with the utmost respect for confidentiality and dignity. Repayment is never requested or sought from the recipient.

The assistance provided directly to our neighbors in need has been significant. In the past ten years alone, over \$178,000 has been disbursed to help offset financial burdens on behalf of 102 individuals and families experiencing emergency financial circumstances.

History

For many years, the original members of the board sponsored an ***annual regional tag sale/flea market*** during the first weekend of June at the Goshen Fairgrounds which drew hundreds of patrons each year. The annual tag sale featuring donated items served as the primary source of revenue for GGNF. This event took weeks of preparation to coordinate and eventually became too cumbersome for a small board and group of volunteers to undertake each year.

For the past ten years, GGNF has sponsored the annual ***Goshen Calendar Contest***. 13 photos taken in Goshen that reflect the beauty and vibrancy of our special town are selected each year from the entries. While not a major source of revenue, the primary goal of the annual calendar is to raise awareness of our organization's existence and purpose continues to do so effectively.

The entire community of Goshen has been embracing The Goshen Good Neighbor Fund, Inc. since its founding. Ongoing generosity on the part of town residents, organizations, special fundraising initiatives sponsored by local farms and businesses and our students at Goshen Center School, donors who participate in the annual "Give Local" event sponsored by Connecticut Community Foundation, grant awards received from The Community Foundation of Northwest Connecticut and The Archdiocese of Hartford's Archbishop's Annual Appeal and corporate matching gift programs have helped us sustain our mission. We could not be more grateful to those who have made donations small and large over the years. **Every cent raised is used to directly provide assistance to our neighbors.**

Looking to the future....perpetuating The Goshen Good Neighbor Fund's ability to meet emergency financial needs of neighbors for years to come....

Prompted by a wonderful suggestion made by lifelong Goshen resident Vicki Kinsella and after hearing Vicki's presentation at a recent board meeting, GGNF is exploring the feasibility of opening a community thrift shop in Goshen. A community thrift shop would provide a means of helping us realize an ongoing income stream to support our mission. As we envision this initiative the thrift shop will tap on a volunteer base of community members willing to give of their time and will also celebrate and showcase all that Goshen offers--town businesses and organizations, points of interest and upcoming events.

Vicki and members of the GGNF are just now exploring a thoughtfully planned, comprehensive strategy to bring this concept to fruition. We are having discussions and seeking the guidance from town officials and expertise of other area nonprofits that have created similar retail fundraising initiatives. We would appreciate community input, ideas and suggestions from Goshen residents, organizations and businesses right from initial planning stages. Please feel free to reach out to Vicki Kinsella via email with your thoughts: allensk7554@sbcglobal.net

Thank you to the St. Thomas of Villanova community!!!

Do you have clothing, bed linens and other items that are showing their age or are not in good enough condition to take to a thrift store for re-sale?

St. Thomas of Villanova has placed a new Clothing Collection Shed located behind the rectory which accepts the following items: clothing, shoes, belts, purses, blankets, towels and bed linens, curtains and stuffed toys. Donations are tax deductible and there are slips in the mailbox attached to the shed. Goods should be placed in a plastic bag and tied prior to placed them in the shed.

Donated items are collected, broken down and made into reprocessed materials. The parish then receives money for the donated items based on weight.

The church's Finance Council recently decided that some of the funds they receive will be used to help support *The Goshen Good Neighbor Fund, Inc.* We are extremely appreciative of this act of generosity!

In gratitude,

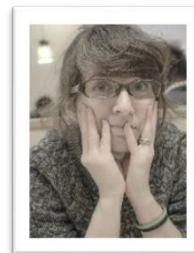
*Carol Aldrich, Treasurer 860-491-3049
Sue Breakell, 860-307-0611
Dora Csehak, 860-618-5401
Marcia Barker, Secretary 860-491-2368
Allen Kinsella, Vice President 860-491-3720
Dan Kobylenski, 860-491-0101
Andrea Loomis, 860-806-1887*

*Don Nardozi, 860-491-3286
Frankie Pardon (Member Emeritus)
Matt Sweet, 860-491-3979
Lisa Tillmann, 860-491-5472
Julia Turtoro, 860-806-2283
Kit Wright, President 860-491-2419
Lu-Ann Zbinden, 860-491-3399*

Goshen Community Care & Hospice Ornament

Goshen Community Care & Hospice is pleased to announce the sale of this year's ornament which highlights the Incorporation of Goshen in the year 1739, and the Town's logo, "Land of Milk and Honey". The ornament has been hand-crafted from pewter at Woodbury Pewter in Woodbury, CT, and features the artwork of Candace Breakell Fujii.

A "Meet the Artist Open House" will be held on Tuesday, October 2nd, from 6:30 – 8:00 p.m., at the Goshen Public Library. Please stop by to meet Candace and view some of her lovely artwork. Our current ornament, as well as those from previous years, will be available for purchase at the Open House. Light refreshments will be served.



The ornament will be available year-round at a cost of \$15, and will include (while supplies last), a free limited-edition color reproduction of an 18th Century sketch entitled, "South View of Central Goshen – Circa 1850". The ornament will be available for purchase at the following locations: The Mary Stuart House, Newbury Archery, Frames and Furnishings, Torrington Savings Bank, Goshen Wine & Spirits, Studio G, Union Savings Bank, the Goshenette, Farmers Insurance, the Goshen Town Library, Town Hall, GCC&H Office, and the Goshen Farmers Market.

All proceeds from the sale of our ornaments will help to support the many services and programs that we offer, free of charge, to the residents of Goshen.



Bereavement Program

A Journey from Grief to Healing & Hope

When: Wednesdays, September 19-October 24, 2018

Time: 6:00-7:30pm

Where: St. Thomas Villanova Church

Route 63 North, Goshen, CT

Cost: FREE Pre-Registration is encouraged to assure appropriate number of materials.

To Register, Call:
860-491-HOPE (4673)

*Grief is like the ocean.
It comes in waves.
Sometimes the water is calm and
sometimes...overwhelming.*

SPONSORED BY:

The Jeff and Diane Johnson
Community Enhanced Fund care of
the Northwest Connecticut
Community Foundation

Goshen Community Care
& Hospice
Facilitator: Karen Jax
Giarnese, RN



WE LIGHT UP A LIFE

The town of Goshen remembers those that have come before us and those we have loved. Goshen Community Care and Hospice conducts this beautiful program of remembrance every first Sunday of December.



Our loved ones are honored at the Old Town Hall with song, prayer, flowers and the reading of their names from the Book of Remembrance. The program is followed by the lighting of the holiday tree outside the Old Town Hall and a buffet of delicious snacks and hot cider. There is no charge.

Each year, the annual program cover is designed by a local artist. Larry Thoms contributed his artwork for the 2017 program. Goshen artists who are interested in designing future programs may contact Goshen Community Care and Hospice at 860-491-4673.

Please hold the date open and join us once again on December 2, 2018, 4:30 pm at the Goshen Old Town Hall as we remember our loved ones and "Light Up A Life."



PO Box 202, Goshen, CT 06756
860-491-HOPE (4673)

ATTENTION CAREGIVERS:

Are you caring with a loved one with a chronic illness? Are you getting overwhelmed? There will be a series of 6 (2 1/2 Hour) classes designed to help family Caregivers.

Powerful Tools for Caregivers is an educational program designed to help family Caregivers. This program will help you take care of yourself while caring for a relative, friend, or someone who lives at home, or a nursing home.

Dates: September 16, 23, 30 & October 14, 21, 28, Sunday Afternoons from 1:30pm-4pm
Location: St Thomas Villanova Church Classroom

For more information please contact Rosemary Bonaguide @ (860) 491-2562 or Dora Csehak @ (860) 618- 5401.

NOBODY DOES IT BETTER!

DIAMOND CREEK PET RETREAT & THE CANINE SPORTS CENTER

Come for a tour, leave with a free night's stay & gift!

- 🐾 ACCOMODATIONS
- 🐾 PLAYCARE
- 🐾 SALON
- 🐾 TRAINING
- 🐾 SUPPLIES
- 🐾 RENTALS

ARF! 99.44% OF
THE FOLKS WHO
TOUR OUR FACILITY
ARE AMAZED!

"It's an hour-and-a-half one way trip for me,
but well worth the drive for the care they provide my dogs."

— Marie L. of Darien, CT

(860) 491-3904

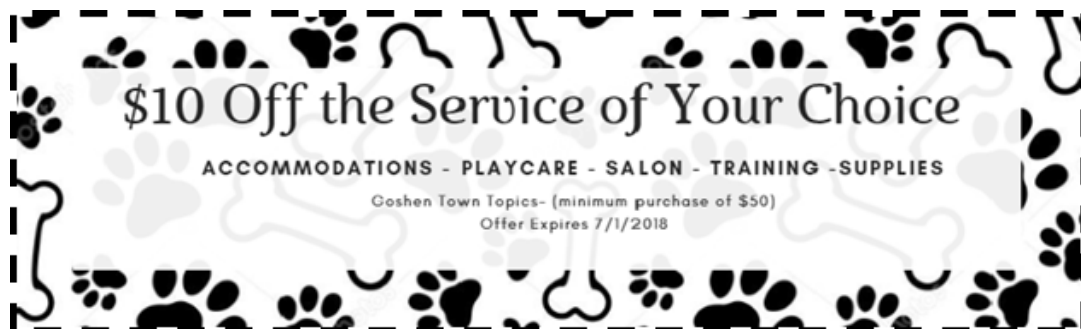
Cats
Welcome!

www.caninesportscenter.com

416 Old Middle Street (Rte.63), Goshen, CT 06756



Offering exceptional services for pets, all conveniently located
in one facility nestled in Litchfield Hills on a 70-acre rural
estate and wildlife sanctuary.



Litchfield Hills Chore Service – for immediate release

Contact: Sally Irwin, Coordinator – 860-567-6121, 860-806-0954

Email: coordinator@choreservicelh.org

“Aging in Place in the Litchfield Hills”

As Americans live longer and healthier lives and want to continue living in their own homes as long as possible, the Litchfield Hills Chore Service is more important than ever. This unique program, supported in part through a grant from the Western Connecticut Area Agency on Aging, provides housekeeping, light chores, and transportation to grocery shopping and medical appointments when needed, to seniors 60 and over, Chore Workers are there to allow the residents to Age in Place. With this extra support, seniors in our 6 towns of Litchfield, Goshen, Morris, Roxbury, Warren and Washington, are able to remain in their homes and in the community that they know and love much longer than normally would be possible.

“Our program is designed to aid seniors who have a limited income and would not be able to pay for these services at market rates,” says Sally Irwin, the Coordinator for the Litchfield Hills Core Service (LHCS). “They are only asked to pay what they can afford based on their income. It is considered a donation.” Those with more resources are asked to pay for their services as appropriate. The First Selectmen from these towns comprise our Board of Directors along with other interested residents. They are instrumental not only in providing town monetary support based on the number of clients served from their towns, but also in assisting with their expertise and experience that increase our ability to serve our clients in innovative and supportive ways. Each senior is provided with the services they want that will help them maintain their homes and have someone to call when there is a crisis. Not everyone has family that lives nearby or is home during the day to run that errand or take them to an appointment. Family, even when nearby, often is at work and not able to do everything the senior needs. The Chore Services fills that gap.

Our Chore Workers are either from the client’s town or nearby, and are carefully screened with background checks. By responding as quickly as possible to a resident’s needs, a Chore Worker is able to visit, do a quick check of the situation, and recommend what services need to be considered. The seniors are so grateful for the extra help; whether assisting with getting the home organized for easier living by arranging furniture and shelves to be more accessible and safe, or cleaning the refrigerator and bathrooms and mopping the floor, or being available to take the senior to a doctor’s appointment or medical procedure, clients know they can count on their Chore Worker. The senior feel

more secure and is no longer stressed about how they will manage! Whether it is assisting with a resident who has just returned from the hospital, running errands for groceries, preparing meals as needed, or a little gardening, the Chore Workers are there to make sure that their client is more comfortable, safe and happy. There is no qualifying paperwork; all that is necessary for a senior to receive service is a call to the Chore Service's at 860-567-6121. A senior has to be age 60 or older. Name, address and phone number, date of birth, and estimated monthly income is the only information requested.

Sally further explains, "With limited staff and limited resources, LHCS keeps the bureaucracy to a minimum, we make our money go a long way. We are most grateful for the support of the Connecticut Community Foundation, the Marion Isabell Coe Fund, the Diebold Foundation and other grants that we apply for. Without this support we could not survive. Sally concludes, "We also rely on the generosity of our friends and neighbors through our Annual Fund Drive in December and the "Give Local" Campaign in the spring, along with donations from our clients for their services. To donate to the Litchfield Hills Chore Service send your contribution to P.O. Box 294, Litchfield, CT 06759. Your donation is tax deductible as we are a 501 (c)(3) charitable organization.

The towns in the Northwest corner are aging and recent demographics show that 50 is the average age in most of these small communities. Because the towns are rural, programs that work well in a city are not always practical in the country. Transportation has become a serious issue and towns often use a bus or van service to transport seniors to shopping and medical appointments. However, buses are not always easy for a fragile senior to manage and the Litchfield Hills Chore Service saw this as a pressing need and added transportation to their list of services. This is particularly useful for seniors that have serious medical issues and need to see an out to town specialist or go to one of the Veterans health centers. Even though the Chore Service provides transportation, it is not a taxi service and anyone requesting this help must be a Chore Service client.

The Litchfield Hills Chore Service helps well over 100 seniors in the 6 town region every year. They do this by keeping costs and overhead to a minimum, and watching every penny. Our largest expense is paying our Chore Workers so they are available to serve our seniors. For more information check the Litchfield Chore Service web site at www.choreserviceclh.org or call 860-567-6121. We are always seeking Chore Workers and new Board Members, so if you are interested the Chore Service would love to hear from you.



Goshen Public Library
42B North Street
Goshen, CT 06756
860-491-3234
Autumn 2018
www.goshenpublib.org

artwork by Candace Breakell

Library Hours

Monday	10 a.m. – 6 p.m.
Tuesday	10 a.m. – 8 p.m.
Wednesday	10 a.m. – 6 p.m.
Thursday	10 a.m. – 6 p.m.
Friday	10 a.m. – 6 p.m.
Saturday	9 a.m. – 2 p.m.

From The Children's Room:

Pre-school Story Hour begins Wednesday August 29th for ages 2 to 5 at 10:30AM. Also Thursdays at 11:45AM. Session will continue until October 4th.

Social Media

We can be found on Facebook, Twitter and Instagram. This is a great way to keep up with programs and new material purchases.

Upcoming Programs – go to our website to learn more

Remember it is always best to call and register for a program, we do need to know if people are interested. If no one signs up we could cancel programs.

History Lecture Series with Mark Albertson

Politics of the Dollar

To many Americans the Dollar is little more than their medium of exchange; that Greenback which provides the ability to buy and sell, invest and save. . . Yet, the brutal fact is that this paper bludgeon is magnificently masked in the garb of deceptive flimsiness; a cudgel with an intimidation factor far more persuasive than any living and breathing soldier, sailor or marine.

Every Dollar is another paper legionnaire, or beefeater for American Capitalism; a mindless, obedient, servant, faithful to a fault . . . ready, willing and able to sacrifice itself on the remorseless battlefield of Realpolitik, to buy, subvert and coerce friend and foe alike in the service of Pax Americana.

Monday, October 15 at 3PM
Monday, November 19 at 3PM
Monday, December 10 at 3PM

Outreach

Unable to visit the library? We'll come to you if you are ill or unable to drive. Call 860-491-3234 to arrange outreach services.



Lynda.com at your Library!

Over 4600 courses on anything from Facebook to computer languages and photography. If you want to take courses to help with professional development or to learn more about Instagram, ask Lynda.com for more information!

What can your library card do for you?

eBooks and Audio Books and magazines?

Oh My!

Please go to our web site and click on the OverDrive link on the upper right hand side of the page if you are looking for eBooks or Downloadable Audio Books. It will ask you which library you belong to and for your library card number.

First Ladies: An Adventure in Glamour, Guts & Gumption

Monday, September 17 at 4PM

The purpose of the presentation is to educate and entertain participants about the personalities and adventures of the women who became the First Ladies of the United States. Who were they really? What made them tick? Did they love or loathe their role?

Did they sink or swim navigating the complexities of politics, protocol and publicity, whether they did so willingly or not?

The presentation is by Mariann Millard and it is designed to be lively, humorous and engaging by weaving historical and modern events and facts about First Ladies to understand and appreciate the important role they play, starting with Martha Washington.

Registration is preferred.

Aging Gracefully: Five Wishes Saturday, November 3 at 10:30AM

The Five Wishes document is an advance directive that is often called a 'living will with a heart and soul' because it covers delicate conversations, such as how you want to be comforted, who you want as your caregivers, and specific situations to help you define what life support means to you.

Participants will receive the document, review it in detail and Participants will be provided with the Five Wishes document and we will go over it in detail. Light refreshments will be served. Please call to register.

Catherine Vlasto LCSW, Hospice Social Worker for New Milford VNA & Hospice.

GPL Movie & Lunch

October 10 at Noon -- Rebecca

November 14 at Noon -- Little Women

December 12 at Noon -- A Christmas Story

FALL 2018 ENVIRONMENTAL FILM SERIES

Sponsored by the Mission 4/1 Earth Team of the Church of Christ, Congregational, Goshen.

All Films are on the 3rd Wednesday of the month, *except for November that is on the 2nd Wednesday.*

Wednesday, September 19th Earthships

Across a two acre stretch in New Mexico, a provocative experiment is taking place. This isn't the kind of test involving nuclear devices that we've come to expect in the desert, but one that attempts to imagine a sustainable society in the aftermath of such weaponry. After all, a post-apocalyptic landscape would require highly sustainable housing, and that's just what designer and ex-athlete Tom Duke has constructed. His unorthodox efforts are the subject of the documentary titled *Earthships*.

Wednesday, October 17th Silas

Liberian activist, **Silas** Siakor is a tireless crusader, fighting to crush corruption and environmental destruction in the country he loves. Through the focus on one country, **Silas** is a global tale that warns of the power of politics and celebrates the power of individuals to fight back.

Wednesday, November 14th Disobedience

Disobedience is a new film about a new phase of the climate movement: courageous action that is being taken on the front lines of the climate crisis on every continent, led by regular people fed up with the power and pollution of the fossil fuel industry.

Wednesday, December 19th Planet Ocean

Planet Ocean features both the magnificence and the exposure of Earth's oceans. The dangers that threaten the whole planet also threaten us. The documentary asserts that the greatest threat to our oceans is humanity. Ironically, that means we're the greatest threat to ourselves, as well.

FREE SOUP SUPPER at 6:30PM; FILMS START AT 7PM

For information call: Church of Christ, Congregational, Goshen (860) 491-2793
860 491-2793

GOSHEN HISTORICAL SOCIETY

The Goshen Historical Society is located at 21 Old Middle Street and the building is open April to October each year. Various programs are held over the summer months. The building is open on **Tuesday's** from 10:00 A.M. to noon from **April to October** and by appointments.

The Historical Society is a volunteer organization, but needs the support of the citizens of Goshen and other people with an interest in Goshen to keep this organization active within the community.

Our summer programs have been very well attended. I thank all the visitors for coming to our events and supporting us.

We will be painting the front of the building and cupola in September with the funds donated to the Historical Society by a very special member. We thank this member for his generous donation.

All of our events are posted on our **SIGN BOARD**. It is placed in front of the building before each event. If you have a subject of interest you would like presented, please inform one of the officers or directors.

WE ARE IN NEED OF MEMBERS:
PLEASE JOIN OUR ORGANIZATION TO CONTINUE THE PRESERVATION OF
THE HISTORY OF GOSHEN. ALL ARE WELCOME.

If you are interested in visiting the academy building, please stop in on Tuesday mornings or give the president a telephone call and she will make arrangements to meet with you.

We wish to thank the 4th Grade students from Goshen Center School who visited us in June.

You can check our web site: **WWW.GOSHENHISTORICALCT.ORG**

FOR SALE


The Historical Society has for sale one (1) Direct-Vent Wall Furnace . It is an Empire Heating units. It is a LP model. If you interested, please call 860-491-3129. It is great unit.



JASON DISMUKES, P.E.
PRINCIPAL


241 Torrington Road
P.O. Box 194
Goshen, CT 06756
T: 860-491-3456 C: 860-309-9161 F: 860-201-4104
jdismukes@dismukesengineering.com
www.dismukesengineering.com

860-491-2290 Gun Sonpal



SONPAL'S POWER FENCE
Electric fences
for gardens, bee hives, livestock, horses.
Member of Goshen Business Circle.

187 West Side Rd



Goshen Recreation Department



www.goshenct.gov/recreation-department

Colleen Kinkade, Recreation Director

860-491-2249 (office)

860-601-6089 (cell)

parkandrec@goshenct.gov

Rent out Kobylenski Lodge at Camp Cochipianee

Looking for a place to have a graduation, birthday party, a celebration or just a gathering??

Look no further than Goshen!!



We are able to offer such a wide variety of activities in Goshen for all ages because of our dedicated volunteers.

If you are interested in becoming a volunteer or would like to start a program please do not hesitate to call the Goshen Recreation office at 860-491-2249

Adult Programs and Events:

Check the website for more info:

www.goshenct.gov/recreation-department

- Yoga:
 - With Jan Troy Mondays at 6:30 p.m. at Camp Coch
- Senior Social:
 - Tuesdays @ Goshen Congregational Church 1pm-3pm

“Sew It’s Thursday” Group:

- Thursdays at 10:00 am throughout the year at Camp Coch. Summers at Woodridge Lake

Children Programs and Events:

Sign up information on website:

www.goshenct.gov/recreation-department

- RSD6 Field Hockey: grades 3-6
 - Mondays 3:30-5pm starting September 10, 2018
- Soccer: TBD
- Archery: Grades 3-6: TBD
- Miss Sherry’s Dance Classes: at Goshen Center School 3:30-4:30
 - Dance: Tuesdays: Grades 2-6
 - Tumbling: Wed: Ages 4-6
- Parent/Tot Tumble Time: at Camp Cochipianee: 10:30-11:30am
 - Tuesdays: Ages 18 months-3 years old
- Halloween Party: 10/26/18 6-8pm

Goshen is Great! Shirts

\$7 each

Kids sizes S-XL, Adult sizes S-XL



GOSHEN TOWN WIDE TAG SALE



The Goshen Rec. Department's 13th annual
Town Wide Tag Sale will be held on:

Saturday, September 15, 2018 from 9am-2pm

Registration fee is \$10

The Rec. Dept. takes care of:

- Newspaper ads, social advertising, etc.
- provides signs and balloons (pick up when registering)
- creates a list of participants
- a marked map for the shoppers to follow

If you live in
Woodridge Lake,
you may use space in
the Camp Coch
parking lot. Take in
and take out policy.

Questions: Call 860-601-6089 or email parkandrec@goshenct.gov

Only homes
with
Goshen
addresses
can
participate.

Deadline to sign up is September 11th

Maps will be available Wednesday, September 12th

Fill out form, cut and drop off or send in with payment to
Goshen Rec. Dept., 42A North Street, Goshen, CT 06756

www.goshenct.gov/recreation-department

**** Make sure to pick up your balloons and sign to put up! ****

Tear off and Send In!

Name: _____

House # _____

Full Address: _____

____ Check here for set up at Camp Coch parking lot.

Telephone # _____ Email: _____

Please have this form and \$10 Registration Fee Payable to: *Town of Goshen* by
Sept. 11th. There will be maps available of the registered tag sales and
newspaper publication of the event.

PUBLIC WORKS DEPARTMENT

The Public Works Department strives to help improve the appearance and maintenance of roads and town property. This could not be done without the hard work of the highway crew.

NEW STONE WALL ORDINANCE

Town ordinance Title 73, Ordinance Concerning Highway Boundary Stone Walls has been enacted. The ordinance is posted on the Town website ordinance page for review. A permit must be applied for at the Public Works Department (permit is also available for download on the public works page of the Town website) prior to performing any work on, the relocation of, or the removal of a highway boundary wall lining Town or State roadways within the limits of Goshen. If you have any questions, or would like to apply for a permit please contact the Public Works Department at 860-491-6029 or by e-mail at publicworks@goshenct.gov.

CAPITAL AND ROAD IMPROVEMENT PROJECTS

This summer season public works initiated the construction phase of a number of projects including the following. Drainage improvements to the north section of Milton Road the south section will start in late summer. The east end of Lyman Lane are have been completed, prior to the paving of these roads they are being reclaimed to allow for regrading and the paving to happen in late this summer. Other roads being reclaimed and repaved include Four Winds Road and Beech Hill Road. Additional road improvements are being made on various paved and dirt roads throughout Town along with improvements to Town owned properties including the new Town owned property on East Street North.



Paving Four Winds Road

WINTER SAND FOR RESIDENTS

Winter sand is available to Goshen residents in small quantities at the Public Works garage next to the red barn at 38 Torrington Road starting in November.

UPCOMING MAINTENANCE AND PROJECTS

The Public Works Department will be regrading the dirt roads in the coming months to ready them for winter. Additionally leaves will be blown from the roadside ditches to keep them clear to allow for the flow of water after the ground freezes. Please **do not deposit leaves or any other materials in the roadside ditches, the Town does not pick up leaves** and the ditches need to remain clear to work effectively draining water away from roads and properties. Brush and vegetation clearing from Town owned right of ways is an ongoing project, this is done to keep clear sightlines along roads and to keep vegetation with accumulated snow loads from hanging into roadways, creating a hazard to motorists. Additionally the department has started the tasks associated with mechanically reading our fleet of trucks and heavy equipment for the upcoming winter season.

FALL/ WINTER SEASON SAFETY

Although the Public Works Department is careful about their surroundings while plowing and treating the roads, please be aware when you are in proximity of these working vehicles, especially due to their limited rear-view vision. Rear view blind spots can extend back 100' on a truck, please give us sufficient room to work and assume the driver does not see you! We all thank you for your cooperation on this important matter of safety.

Additionally, please make every effort to keep your trash and recycling totes off of the edge of the roadways for the safety of roadway users.

DRIVEWAY ORDINANCE AND PIPE MAINTENANCE

Title 18, the Town of Goshen Driveway Ordinance concerning the construction of driveways including temporary access driveways on Town roadways. The ordinance also covers the maintenance of driveways. A permit must be applied for at the office of Public Works prior to the start of construction of a new driveway, or the repaving, re-grading or drainage improvements being performed to an existing driveway if any of the proposed work is to take place in the Town right-of-way. A cash bond will need to be posted by the property owner or contractor performing the work, the bond amount will be calculated at the time of application based upon the probable cost of the work to be performed in the right-of-way. There is no permit fee for a driveway application. Please see Ordinance Title 18 for more information or contact Public Works at 860-491-6029 or by email at publicworks@goshenct.gov with questions or to apply for a permit.

Additionally the ordinance requires that property owners with a cross pipe under their driveway or other drainage system maintain it in a functional condition. Please make a part of your fall property cleanup the cleaning out and inspection of your drainage pipes to allow for the free flow of water. Thank you for your cooperation in this important matter.

MAILBOX DAMAGE

The Public Works Department is not responsible for damage to one's mailbox unless one of our vehicles directly inflicts damage to the mailbox. **Should snow or debris damage the mailbox as a result of plowing, the Public Works Department is not responsible for replacement or repair.**



RAT (Recycling And Trash Committee)



MIRA Recycling Center, Where Your Recyclables Go

WHERE DO YOUR RECYCLABLES GO?

Members of your Goshen Town RAT committee went on a fact finding visit to MIRA (Materials & Recycling Authority- www.ctmira.org.) in Hartford last month. The above photo is where your recyclables are dropped off by the Refuse companies. According to MIRA "In CT, the average adult produces 5.5 lbs. of garbage each day. That equals 1 ton (2000 lbs.) of waste per year per adult!"

GLASS

One of the big problems in recycling is glass that is contaminated with bits of other recycled matter. This material is difficult to sell. Much of it ends in a landfill in another state at a greater cost to the taxpayer. To help with this problem, please return all your deposit bottles/cans to the grocery stores where it will be recycled and reused.

PLASTICS

Another huge problem is the use and disposal of Plastic bags. These items clog the machinery at the recycling center resulting in slowdown and downtime due to breakdown of the machinery. These bags are not saleable in the recyclable market and will end up in "trash to burn".

- Instead of having groceries/goods packed in plastic bags, invest in re-useable totes/bags
- If you do use plastic bags, return them to grocery store. They will be used in industry.

HAPPY RECYCLING!!

More than a bank...

WE'RE PART OF *your* COMMUNITY.



Union
Savings Bank



unionsavings.com

860.491.4001
866.872.1866

Member FDIC

LaPLACA

OIL & PROPANE

"Keeping Litchfield County Warm Since 1982"

24 Hour Emergency Full Service

- *Very Competitive Prices* •
- *Volume Discounts* •
- *All Size Propane Tanks Available* •
- *Above & Underground Propane Tanks* •
- *Automatic Delivery* •
- *Boiler & Furnace Installations* •
- *Electric Heat Conversions* •
- *Licensed Technicians* •

498 North Street, Goshen, CT 06756
Ph.: 860.491.3737 • Fax: 860.491.3858
laplacaoilandpropane@gmail.com
www.laplacaoilandpropane.com



Goshen Garden Club's

2018 Fall Fundraiser

Presents

Tip Your Hat!

A Parade of Hats from the Past!

Music by William Benson Hats by Glenn Beyus

November 3, 2018

Chatterley's Banquet Facility

371 Pinewoods Road

Torrington, CT

Doors open 11 am – Luncheon at noon

Cash Bar

Spectacular Raffle Baskets

**Proceeds to benefit Goshen Gardens, college scholarships,
and horticultural therapy at area nursing homes.**

Tickets are available for \$ 35.00

Please contact Kathe at 860-485-3145

'TIS THE SEASON

Have your friends and neighbors stopped picking up when you call? And they don't answer the door when you knock even though their car is in the driveway. It's not you. It's your zucchinis! I have taken to drive by drop offs, which is easy as I quietly pull into their driveways and drop my harvest of zucchini's at the door. Stealth is the trick.

A friend stopped by this afternoon for a few things from the garden. When I started towards the zucchini patch she picked up her pace and hurried towards her car.

It's not that we don't all love zucchini but enough is enough.

This is the season we all waited longingly for. When the time came, we planted enthusiastically, forgetting last summer's foraging for new zucchini recipes.

Five years ago the idea was proposed for a community garden in Goshen. Initially many of us reacted with "In Goshen? Everyone has a garden."

But then we realized that in our larger community there were many without access to fresh, nutritious, and locally grown food.

Thus the "Garden of Feedin'," "a portion of the Goshen Green Garden, was created. There a group of volunteers grow veggies to distribute to those in need in our community. Recipients are the Goshen Seniors who meet on Tuesdays at the Church of Christ. Also benefitting from the garden are clients of FISH, Friendly Hands and the Torrington Community Kitchen. And it is more than zucchini! There is a bounty of tomatoes, beans, lettuce and other greens, beets, carrots, and yes, a variety of squash.

So if you wish to celebrate this season of growing and giving, give from your own home garden. And if you want to see grateful smiling faces, bring your surplus veggies to one of the places mentioned above!

The Goshen Green Garden and the Garden of Feedin' are projects of the Church of Christ Congregational. The Goshen Agricultural Society generously provides the land on which we grow. It is open to all. For info call: 860 491-2793



Lynn Fulkerson, Goshen Green Garden



Goshen Land Trust

The Land Trust has had a busy year maintaining trails, continuing the battle of clearing out invasive species from preserved properties, working with owners interested in protecting their land with conservation easements, as well as enjoying our trails with family and friends. The Trust currently has 510 acres of fee land (donated or purchased, now owned by the Land Trust) and 183 acres of land protected by easements, for a total of 693 acres protected in perpetuity – that means this land will be preserved for our grandchildren’s grandchildren.

When thinking about the Goshen Land Trust’s work, it is easy to get focused on things like current finances (We appreciate your donations!), our office and trails (They’re all good!), and what the next activity or event is. Our true focus is the far future, though. The impact of our efforts will be felt, and hopefully appreciated, by a population yet unborn.

Our mission is:

The Goshen Land Trust seeks to improve the quality of life for current and future generations of Goshen-area residents through the preservation and stewardship of natural and open lands. The Goshen Land Trust’s intent is to protect such land in perpetuity for the purpose of habitat preservation and enhancement, water quality protection, agricultural productivity, education, passive recreation, and scenic and historic preservation.

Our Conservation Goals

The Goshen Land Trust seeks to preserve, in perpetuity, land in the town of Goshen, for the purposes of habitat preservation and enhancement, water quality protection, agricultural production, passive recreation, and scenic and historic preservation. To these ends, the Land Trust seeks, through outright gift, conservation easement, or possibly purchase, to preserve the following lands:

- 1) Habitat of threatened or endangered species***
- 2) River corridors***
- 3) Large tracts of undeveloped land***
- 4) Corridors connecting preserved land***
- 5) Scenic and historic sites***
- 6) Prime agricultural land***
- 7) Land abutting protected land***
- 8) Other significant open space areas including wetlands and forested areas.***

Does this sound like important work? We think it is! If you would like to learn more or think you would like to volunteer to help, email president Barry Donaldson at bdonaldson@goshenlandtrust.org or leave a message on our office phone: 860-491-LAND.

Fall Events:

Fall Hawk Migration, Saturday, September 15th 9-3:30pm, Meet at 16 Mill Street. Bring binoculars, chair and lunch. With a little luck the sky could fill with 1000’s of migrating hawks! If

you can only come in the afternoon, meet us at Mountain View Preserve located 4.5 miles north of the rotary on Rt.63. Park at preserve pull out just past the red Art Barn.

Annual Tour of Goshen, Sunday, October 7th 12:30-5pm. Meet at the Town Hall to board the bus! Every year we spend some time at the Goshen Historical Society and stop at one of our agricultural businesses while touring our town noting historical and Land Trust properties. Great Fun! RSVP c.craig@goshenlandtrust.org or 860-485-4205.

Fall Foliage Hike, Saturday, October 20th, 1-4pm at Mountain View Preserve located 4.5 miles north of the rotary on Rt.63. Park at preserve pull out just past the red Art Barn.

Can't join us for these activities, but you would like to take a hike? Download our trail maps from our website www.goshenlandtrust.org . Nervous about going out alone? Give us a call and we'll set up a time to meet you. We have beautiful places in Goshen. Get to know them!

Help Keep Goshen Green!

Coffee-Tea-Etc.,LLC

Freshly roasted in Goshen
Member of Goshen Business Circle

Coffees

Teas



Hot Chocolate

Chai Masala

www.coffee-tea-etc.com



Organic Fair Trade Bird friendly

\$1 refund on purchase with this ad

Identification and control of invasive plant species found in Goshen

The upcoming Town Topics Newsletters will feature some of the more common invasive plants found in our town. The Goshen Conservation Commission wants to better educate landowners and homeowners on the control or eradication of these plants.

What are Invasive plants?

Invasive plants are non-native plants that are disruptive in a way that causes environmental or economic harm, or harm to human health. In minimally-managed areas, invasive plants crowd out native plants. The presence of invasive plants alters the way plants, animals, soil, and water interact within native ecosystems, often causing harm to other species in addition to the plants that have been crowded out.

The State of Connecticut defines invasive plants as follows:

1. The plant is not native to the state, and the plant is naturalized or has the potential to become naturalized or occurring without the aid and benefit of cultivation in an area where the plant is not native
2. Under average conditions, the plant has the biological potential for rapid, widespread and excessive dispersion and establishment in the state or region within the state; the plant also has the biological potential for existing in high numbers outside of habitats that are intensely managed
3. The plant occurs widely in a region of the state or a particular habitat within the state, and is able to out-compete other species in the same natural plant community
4. The plant has the potential for rapid growth, high seed production and dissemination and establishment in natural plant communities.

Examples of invasive plants which should be controlled:

Burning Bush (*euonymus alatus*)

Burning bush, also commonly known as winged euonymus, was introduced into the United States in 1860 from northeastern Asia for use as an ornamental shrub. Its attractive, bright red fall foliage and desirable form has made this shrub a popular ornamental and an easy go-to plant used by landscape designers. Burning bush is a fast growing, deciduous shrub that may reach five to 15 feet in height. Its green stems usually have prominent, corky wings. Elliptic leaves with finely serrated margins are arranged in opposite formation and turn a brilliant purplish-red to scarlet in the fall. Flowers are small and yellowish-green, becoming fruits that split to expose four red-orange seeds in late fall.

Winged euonymus quickly escapes into woodlands, mature forests and open fields. It is highly adaptable to a variety of soil types and pH levels, although it generally doesn't do well in dry areas. It is tolerant of full shade. This shrub is a prodigious seed producer. Many germinate where they fall, close to the mother plant, creating a dense bed of seedlings. Others are carried by birds, allowing infestations to spread rapidly.

Winged euonymus easily outcompetes native plants with its large, dense silhouette. Lacking pests and tolerant of deep shade, this shrub can force itself into moist forested sites, creating large thickets that displace native herbs and shrubs.

Alternative native plants are Arrowwood, Bayberry, Witch hazel, and Highbush Blueberry.



Figure 2 fall leaf color change with berries on burning bush, Leslie J. Mehrhoff, Univ. of CT



Figure 1 Crimson Fall foliage, Leslie J. Mehrhoff, Univ. of CT

Management Options:**Mechanical:**

Seedlings, up to two feet tall, can be easily hand-pulled, especially when the soil is moist. Larger plants must be dug out with a spading fork, pulled with a weed wrench, or cut. The stump must be ground out or the re-growth clipped; be sure to remove a majority of the root system.

Herbicides:

Glyphosate can be applied as a foliar spray or painted on cut stumps, as directed by label.

ROUNDUP [glyphosate]

Common reed (*phragmites australis*)

Common reed is a tall perennial wetland grass, growing up to 15 feet in height, with a distinctive purplish-brown plume that appears in late July. The vertical stems (culms) arise from horizontal shoots that grow either above or below ground. This plant can spread ("run") over large areas. Common reed thrives in sunny wetland habitats and prefers fresh or brackish water and grows in drier elevated marsh areas, but can also be found along lakeshores, riverbanks, and almost any moist area.

Stands of common reed are established through dispersal of seeds or pieces of underground stems called rhizomes. Once established, stands grow predominately by sending up new shoots each spring from existing rhizomes, or from aboveground runners called stolons. If an aerial shoot is knocked over, it can act like a rhizome, taking root and producing new shoots. This invasive grass can return year after year, and some stands are believed to be 1,000 years old. The purplish flower head turns grey and fluffy as it goes to seed by August. Leaves die and fall off at the end of the season, leaving the familiar tan stalks and plumes that remain standing through winter and eventually decay.



Figure 3 Common reed growing next to road, Leslie J. Mehrhoff, Univ. of CT



Figure 4 Common reed infestation, Leslie J. Mehrhoff, Univ. of CT

Alternative native plants are Pussy Willow, Switchgrass, Broom Sedge or Big Bluestem.

Management Options:**Mechanical:**

Cutting or pulling has been used successfully to control small stands of phragmites. Treatments usually need to be repeated annually. The best time to cut phragmites is at the end of July. Cutting at other times may increase stand density. Phragmites stems should be cut below the lowest leaf, leaving a 6" or shorter stump. In the winter, dead culms can be cleared by controlled fire or cutting/mulching to open the area for desired species. The process usually needs to be repeated in the second year to reduce the number of remaining plants, and repeated every three to five years after that. Mechanical cutting may also contain it, and recent efforts with black plastic have had some success. In any case, there is no easy solution to the control of this aggressive species.

Herbicides:

Herbicide control is a two-year, two-step process at the very least. An initial herbicide treatment stresses the plants, making them particularly vulnerable to subsequent treatments. Creating multiple stresses on the plants is the most effective way to control phragmites. Glyphosate and Imazapyr based herbicides (e.g. Rodeo/Roundup and Arsenal) are the most effective chemicals to control phragmites. Stands can be treated with Rodeo, the herbicide of choice for work in wetlands. It is most effective when applied in the early fall when nutrients are being displaced from the leaves and stems for storage in rhizomes. A permit from DEP (Department of Environmental Protection) is required to purchase and/or use Rodeo in Connecticut wetlands. Use herbicides responsibly and follow manufacturer's directions.

- RODEO [glyphosate]
- ARSENAL [imazapyr]



Thanks for all the generous donations in the 2018 Flags Around Goshen campaign! The Lamson-O'Donnell American Legion Post 46 and Goshen Volunteer Fire Company have graciously agreed to lend support from hereon, with Dawn Wilkes as liaison for all flag related matters. Kindly report flags in disrepair or otherwise compromised at 860-491-9200.

In addition to the flags project, the Goshen Business Circle has been supportive of the recent Goshen Summer Farmer's Market move to Scoville Park across from Town Hall in Goshen's village center. The information kiosk is to be relocated and freshened, with current events from our immediate region highlighted. Thanks to the Goshen Historical Society for sharing the information board with GBC, and the Goshen Land Trust for working with us on the signage, bringing the passive recreational asset of the GLT trails map to passersby.

The Goshen Business Circle exhibit at the Goshen Fair was a big success and proved to be a fun venue to inform friends and neighbors of our mission and our membership. This opportunity for outreach was a chance to showcase the dynamic and diverse businesses and services across our small town, each complementing and supporting the next. If you didn't visit our display at the Goshen Fair Art Barn this year, be sure to find us next season.

In the months ahead, the Goshen Business Circle will hold elections for its supervisory Board and team leadership. Any interested members are encouraged to participate in this annual event, held the second Wednesday of October (the 10th) at 8:30am at the Town Hall conference room. Our membership grows with each meeting, and we welcome all.

Finally, the year-end holiday party is in its planning stages; look for updates and e-blasts soon!





Goshen Business Circle - www.goshenbusinesscircle.com

Arbor Services

Sepples Tree Service 860.491.3279

Art, Design & Graphics

Betsy Gentile 36goshensun@optonline.net
 Frames & Furnishings 860.491.2767
 Lori Barker lbarker2@optonline.net
 Pat Sullivan, Fine Artist loonsullivan@gmail.com
 Steve Soklin siegelsoklin@gmail.com
 Tammie Valentine valentinesultd@optonline.net

ATMs/Banking/Financial Services

Al Torizzo, Torizzo ATM 860.836.3276
 Janet Dember, Waddell & Reed 860.489.4676
 Jeffrey Cole, CFP, Merrill Lynch jeffrey.cole@ml.com
 Torrington Savings Bank www.torringtonsavings.com
 Union Savings Bank lcossette@unionsavings.com

Automotive Services

Litchfield Hills Motor Sports, LLC 860.491.5467

Bed & Bkfst

Mary Stuart House 860.491.2260 Mary@MaryStuartHouse.com

Builders/Home Improvement/Painters

Bill Skoczylas Bdg & Remodeling billscott@optonline.net
 Breakell, Inc. breakellinc@yahoo.com
 Ducci Kitchen, Inc. www.duccikitchens.com
 Ed & AJ Building emeto@optimum.net
 Fay & Wright, Inc. Excav/Sitework faywright1983@snet.net
 HTH Automatic Sprinkler 860.491.1484
 Litchfield Stereo Design Frank@litchfieldstereo.com
 Mathew Wheeler, Stonework 860.689.3455
 New England Hearth & Soapstone rod@rodzander.com
 Peter Barwikowski 860.309.0391
 Prause Building Const LLC 860.491.2159
 ProQuality Painting & Home Repair 860.201.7788
 ROMA Construction & Landscaping 860.485.8990
 Sonpal's Power Fence 860.491.2290
 Spring Valley Building Co, LLC svbllc@live.com
 Thomas Custom Builders www.thomascustombuilders.info
 Village Blacksmith Shop www.villageblacksmithshop.com

Dining/Food Preparation

AJ's Steak & Pizza 860.491.4733
 Ciesco Catering charlened@ciescoservices.com

Events/Tourism

Litchfield Jazz Festival vmuir@litchfieldjazzfest.com
 rachel@litchfieldjazzfest.com

Farm and Farm Market Info

Carl Contadini, Old Barn Farm contadini@optonline.net
 Clinton Orchards, Apples clintonwb@hotmail.com
 M&S Wheeler, Stonedrift Farm wheeler5smjjj@optonline.net
 Thorncrest Farm, LLC tcfarmllc@optimum.net
 Tina Torizzo LITCHFIELDWINE@AOL.COM

Fuel Services

Goshen Oil Co, Inc 860.491.2373 goshenoil@gmail.com
 LaPlaca Oil & Propane Inc 860.491.3737

Insurance

Robert Layer, Farmer's Insurance rlayer@farmersagent.com

Outdoor Sports & Recreation

Autumn Gunworks 860.491.4867
 Fishing Quiet Waters fishingquietwaters.com
 Newbury Archery NewburyArcheryLLC@gmail.com

Personal Services

Darlene Demetri, Grant Writing for NonProfits 860.491.3832
 Executive Livery Service LLC 860.307.3163

Pet Care/Classes/Facility

Caitlin Mosca CATMOSCA@OPTONLINE.NET
 Diamond Creek Pet Retreat www.caninesportscenter.com
 Lori Jankowics, Visiting Vet Tech loriannsh@gmail.com

Real Estate Professionals

Dawn E. Wicks Appraisals, LLC 860.491.9200
 Dustin Mosley, EJMURPHY RE 860.309.3386
 E.J. Murphy Real Estate www.EJMURPHYREALTY.com
 LuxeLook RE Staging 860.806.0952
 Todd Carusillo Real Estate, LLC 860.459.4042
 William Pitt Sotheby's Int'l Realty www.PPGRealtors.com

Real Property Care/Mtnic

Black Eyed Suzie's 860.480.3789
 Knox Property Services 860.689.3057
 Korner Kare, LLC 860.491.3731
 Old Oak Landscaping alexandermiller1784@gmail.com
 Prause Enterprises LLC 860.605.7504

Salon Services

Dawn Grosclaude SHEAREXPRESSIONS@SBCGLOBAL.NET
 Debbie Leskanic, Studio G 860-307-4999
 Hair by Julia Grosclaude Julia.Grosclaude@yahoo.com
 Jennifer Tyrrell FIFTYSHADESOFGREYHAIRSSALON@GMAIL.COM

Specialty Merchandise

Coffee-Tea-Etc., Coffee Roasters www.coffee-tea-etc.com
 Goshen Grains GOSHENGRAINS@GMAIL.COM
 Goshen Wine & Spirits goshenwineandspirits@gmail.com
 Lifestyle by Lori, Repurposing furniture & Sales lori@lifestylebylori.com
 Milk House Chocolates tcfarmllc@optimum.net
 My Beautiful Life, Soap & Bee Products 860.307.5426
 Nodine's Smokehouse www.Nodine.Smokehouse.com
 The Open Talon, Clint Thorn 860-307-6244

Wellness

Amy Tobin, Holistic Massage Practitioner 860.491.5207
 Catherine Vlasto, Essentials for Wellness cvlasto@hotmail.com
 October Gardens Yoga joannlivolsi@hotmail.com
 Pam Tichy, Rodan + Fields 847.370.6191
 Rebecca Prause 860.491.3113
 Reiki Wave, Reiki, Meditation, Yoga anitashaggy@gmail.com
 Susan Wheeler Wellness 860.307.5901
 Jane Sirignano Food for Life Instructor jane@janesirignano.com

Winery/Vineyard

Miranda Vineyard www.mirandavineyard.com
 Sunset Meadow Vineyards www.sunsetmeadowvineyards.com

FALL SALES!

KENDALL
JACKSON
CHARD \$10.99!!
ALL SEPTEMBER



Monday-
Saturday 9:30-8
Sunday 10:30-5

goshenwineandspirits@g
mail.com

Goshenwine.org

860-491-2078

61 Sharon Turnpike



TITOS 1.75 Vodka 26.99 ALL OCTOBER 10%
below STATE MIN!

Oyster Bay Sauv Blanc 750's 10% below State
Min All November

FREE DELIVERY
PRICE MATCHING

Everyday we strive to not only be the convenient
option but your favorite option. Anything you need
whenever you need it. Thank you all!

Remember Goshen Wine for all your Thanksgiving Day needs!



TOWN PHONE DIRECTORY

To reach an extension, call the number listed below.

You will be asked to dial the extension listed below. If the person you are calling is unable to answer their phone, you will be able to leave a message in the individual's voice mail.

<u>NAME</u>	<u>TITLE</u>	<u>PHONE</u>	<u>EXT</u>	<u>HOURS</u>
Animal Control Officer		(860) 824-2500		
Baldwin, Bill	Fire Marshal	(860) 601-8940		Cell phone (No office hours)
Breakell, Kate	Data Entry Clerk	(860) 491-6034	223	Mon & Wed 8:30-4
Breakell, Kate	Library Aide	(860) 491-3234		Library Phone Number
Breakell, Sue	Registrar of Voters	(860) 491-2308	236	1st & 3rd Tues 9-noon
Breor, Barbara	Town Clerk	(860) 491-3647	224	Mon-Thurs 9-12 & 1-4 & Fri 9-1
Connor, Marty	Enforcement Officer	(860) 491-2308	232	Tues & Thurs 7:30am-9:45am
Doherty, Nadine	Children's Coordinator	(860) 491-3234		Library Phone Number
Gregoire, Paula	Library Aide	(860) 491-3234		Library Phone Number
Hall, Barry	Fire Chief	(860) 491-2526		
Harlow, Garret	Public Works Supervisor	(860) 491-6029		Mon-Friday 7:00 - 3:00
Howard, Nanci	Registrar of Voters	(860) 491-2308	236	1st & 3rd Tues 9-noon
Hussman, Lucy	Assessor	(860) 491-2115	230	Tues & Wed 9-12 & 1-4
Jurchert Derungs, Rebecca	Tax Collector	(860) 491-3275	226	Tues 9-12 & Wed 1-4
Kinkade, Colleen	Recreation Director	(860) 491-2249		Mon-Thurs 8:30-4 & Fri 9-12
Kinsella, Dexter	Selectman	(860) 491-3364		Home number
Leclair, Denise	Assessment Clerk	(860) 491-2115	229	Tues & Wed 9-12 & 1-4
Paige, Lucille	First Selectman's Aide	(860) 491-2308	239	Tues, Wed & Thursday
Perry, Virginia	Selectman's Admin. Asst.	(860) 491-6034	228	Mon-Thurs 8:30-4 & Fri 8:30-12
Romano, Steven	Selectman	(860) 491-3765		Home number
Scanlon, Megan	Assistant Town Clerk	(860) 491-2308	225	
Steinmayer, Lynn	Library Director	(860) 491-3234		Library Phone Number
Valentine, Robert	First Selectman	(860) 491-2308	221	Mon-Thurs 8:30-4 & Fri 8:30-12
Zibell, Chris	Building Official	(860) 491-2308	231	Tues & Thurs 7:30am-10am
OTHER PHONE NUMBERS (OWNED BY TOWN)				
Camp Cochepianee	291 Beach St.	(860) 491-3367		
Goshen Firehouse	181 Sharon Tpke.	(860) 491-2526	or	(860) 491-3855 (General calls)
Goshen Library PHONE	42 North St.	(860) 491-3234		
Goshen Library FAX		(860) 491-0100		
Public Works	38 Torrington Rd.	P: (860) 491-6029 P		F: (860) 491-6036
Town Hall FAX	42 North St.	(860) 491-6028		
OTHER PHONE NUMBERS (NOT OWNED BY TOWN)				
Goshen Fairgrounds		(860) 491-3655		
Goshen Post Office		(860) 491-2733		
State Police - Canaan		800-497-0403		
U.S.A. Hauling - Recycling		(860) 379-1662		

**Town of Goshen Old Middle Street Burying Ground
"God's Acre" 1745-1905**

Troop 35 Eagle Scout Project by Matthew Perry



1905



2018

Town of Goshen
42A North Street
Goshen, CT 06756

"Presorted Standard"
U.S. Postage Paid
Permit No 350
Torrington, CT 06790
CR RT PRE-ST

Postal Patron
Goshen, CT 06756