



Goshen Town Topics

Winter 2022

42A North Street, Goshen, CT 06756 • 860-491-2308 • www.goshenct.gov

From the First Selectman

With freezing rain and snow just around the corner, I believe God is watching over us with this mild fall we are having. Saving us hundreds of thousands on home heating oil. Don't forget to get your heating system upgraded or serviced before winter sets in.

We are passing on the EV charger for the Town Hall parking lot, the cost of (\$178k), and the digital sign for the Town Hall entrance, the cost of (\$130K) isn't worth wasting our taxpayer's dollars.

I made a promise to make the center safer. The Selectmen and I have been working with the Department of Transportation on new plans for our center rotary. Some of you attended the Selectmen's meeting, where we invited DOT to give a presentation on the plans they believe will work for our community. When all completed, this will make the rotary safer for all who travel through Goshen center.

I received approvals for digital speed signs from the Department of Transportation. I had Public Works install the speed signs in front of the Town Hall headed north of the rotary and the southbound lane across the street from the Town Hall. Hopefully this will slow traffic down from the North side of Route 63.

I made an application to the Department of Transportation Traffic division, to discontinue the passing lane between Ivy Mountain Road and Westside Road, where that young 28-year-old man was killed on his motorcycle. I just received approvals from the State DOT. They will be removing the passing signs and repainting the lines, indicating no passing. Hopefully this will save lives.

Please watch your kids while they play in their yards. With the recent turn of events in Morris, where a black bear grabbed and attempted to drag a 10-year-old boy into the woods. Thank God for the grandfather and neighbor next door, who helped save the child from harm or death. Bears are not friendly or cute, they are dangerous. Be wise and vigilant to your surroundings. The Bears are everywhere and it's only going to get worse as their population grows.

Please continue to recycle and compost. MIRA (Materials Innovation and Recycling Authority) has raised our tipping fees for our rate per ton, to move our solid waste from Torrington to Hartford. Now they want to raise our rates to move our solid waste from Hartford to Lexington Ohio, which the increases will be passed along to the taxpayers. So, stop putting your old tile or broken toilet in that roadside bin. It's all weight that the taxpayer is flipping the bill. Get a dumpster at your house if you're remodeling. Let's all work together on this. Let's keep Goshen clean and green.

By now all property owners in Goshen should have received a Notice of Assessment Change, from the Assessor's Office as we complete the 2022 Revaluation. Please note, that the overall residential increase for the town is 28% and it is anticipated that the mill rate will be adjusted for the July 2023 tax bills.

If you have any questions concerning Goshen's social services, please contact the First Selectman's office at 860-491-2308, ext. 221

And lastly, Goshen Fire Company is looking for EMT's, Contact Chief Hall for an application to volunteer.

Todd Carusillo, First Selectman

REMINDER 2ND INSTALLMENT on PROPERTY TAXES DUE January 1, 2023
Last day to pay without penalty: Wednesday, February 1, 2023

Pursuant to Sec. 12-145 of the Connecticut statutes, the undersigned Tax Collector of the Town of Goshen gives notice that she will be ready to receive Supplemental Motor Vehicle taxes and the second installment of Real Estate & Personal Property taxes due January 1, 2023 at the Tax Collector's office in the Goshen Town Hall, 42A North St, Goshen, CT on Tuesdays from 9:00 – Noon and Wednesdays 1:00 – 4:00.

Payments must be received or postmarked by Wed., February 1, 2023 to avoid interest.

They will be late if received/postmarked on Feb. 2ND!

Don't wait till the last day to mail your payment. It may take the postal service up to 24 hours to deliver your mail to a distribution center where the postmarks are added.
Ask postmaster to hand stamp postmark on the last day of the month.

Online banking checks through your personal bank – these payments are NOT postmarked and they are often NOT received till after date you requested.

All taxes remaining unpaid after February 1, 2023 will be charged interest from January 1, 2023 at the rate of 1.5% for each month elapsing (total of 3% on 2/2/2023) from the due date of the delinquent tax to the date of payment, with a minimum interest charge of \$2.00. Sec. 12-146

Failure to receive a tax bill does not relieve the taxpayer of his/her responsibility for the payment of taxes or delinquent charges. Sec. 12-130

You may also pay online at <http://www.goshenct.gov>

There are convenience fees

- Credit Cards: Point & Pay charges a 2.9% convenience fee, \$2.00 min.
- Debit Cards: Point & Pay charges flat fee of \$3.95 for payment processing.
- E-checks/ACH payments: Point & Pay charges fee of \$2.95 if the payment is less than or equal to \$10,000.00 and \$10.00 for each payment that is greater than \$10,000.00.

Email Reminders – Taxes Due

Sign up for Tax Collector notices – you will receive reminder notices in December of upcoming due dates for taxes.

Never forget that January installment again.

www.goshenct.gov & subscribe for e-alerts on home page,
select Tax Collector's Office & any other desired news/alerts

Did you pay OFF your mortgage??

Are you paying off your mortgage before the 2nd installment is due??

Contact the Tax Office to notify us. The banks do NOT notify the Tax Office

If you have any questions, please contact us at (860) 491-3275 ext. 226 or

taxcollector@goshenct.gov

Goshen's 2022 Revaluation Notices Mailed

The Assessor's Office is in the process of completing a revaluation of all Real Estate in the Town of Goshen for the October 1, 2022 Grand List. New values have been determined and each property owner has been mailed an individual notice of their new assessment and given an opportunity to schedule an informal hearing.

Do not apply the current mill rate to your new assessment.

A new mill rate will be set by the Board of Finance with the adoption of the 2023/2024 town budget in the spring of 2023.

You may view your assessment data on the Vision Government Solutions web site: www.vgsi.com. This web site will allow inquiry access to the Assessor's database, including value summary, property data, and general revaluation information. Property information is also available in the Goshen Assessor's Office.

If you wish to appeal your assessment, you must file a written appeal to the Board of Assessment Appeals on the prescribed form on or before February 20, 2023.

Forms are available on the Town of Goshen Website

<https://www.goshenct.gov/board-of-assessment-appeals> or from the Assessor's Office in the Goshen Town Hall. ***By state statute, an appeal can be heard only if the written request has been submitted on the prescribed appeal form to the Goshen Board of Assessment Appeals by February 20, 2023.***

Please contact the Assessor's Office with any questions.

Tuesdays & Wednesdays 860-491-2115 x 230

taxassessor@goshenct.gov

PUBLIC WORKS DEPARTMENT

The Public Works Department strives to help improve the appearance and maintenance of roads and town property. This could not be done without the hard work of the public works department staff.

!!PARKING BAN!!

There is a **Parking Ban on Town Roads** during winter weather storm events between **November 1st and April 1st**. (Town Ordinance Title 17, www.goshenct.gov). Vehicles and trailers left on the roads during these times **may be towed at the owner's expense.**

NEW STONE WALL ORDINANCE

Town ordinance Title 73, Ordinance Concerning Highway Boundary Stone Walls has been enacted. The ordinance is posted on the Town website ordinance page for review. A permit must be applied for at the Public Works Department (permit is also available for download on the public works page of the Town website) prior to performing any work on, the relocation of, or the removal of a highway boundary wall lining Town roadways within the limits of Goshen. If you have any questions, or would like to apply for a permit please contact the Public Works Department at 860-491-6029 or by e-mail at publicworks@goshenct.gov.

CAPITAL AND ROAD IMPROVEMENT PROJECTS

The past construction season was again a busy one for the public works department. In addition to working on many road projects over the spring and summer months. The Public Works Department continued to replace drainage pipes in several areas throughout Town. Additionally we made improvements to a section of North Goshen Road. Public Works will be in the process of planning capital improvement projects for next year and beyond during the winter season.



Recently Completed Maintenance Project – N. Goshen Rd.

WINTER SEASON SAFETY

Please make every effort to keep your trash and recycling totes off of the edge of the roadways for the safety of roadway users and to allow for the plowing of roads during storms.

Although the Public Works Department is careful about their surroundings while plowing and treating the roads, please be aware when you are in proximity of these working vehicles, especially due to their limited rear-view vision. Rear view blind spots can extend back 100' on a truck, please give us sufficient room to work and assume the driver does not see you! We all thank you for your cooperation on this important matter of safety.

Any job site the Public Works Department is working at is considered a **WORK ZONE** and **FINES** will be **DOUBLED**. This includes crews cutting vegetation along the roadsides. Please drive slowly and cautiously by these areas. If possible, please find an alternate route until work is completed.

WINTER SAND FOR RESIDENTS

Winter sand is available after November 1st to Goshen residents in small quantities at the Public Works facility. Sand is located in the bin next to the red barn at 38 Torrington Road. Be warned the area is under monitor.

MAILBOX DAMAGE

The Public Works Department is not responsible for damage to one's mailbox unless one of our vehicles direct impact causes damage to the mailbox. **Should snow or debris damage the mailbox as a result of plowing, the Public Works Department is not responsible for replacement or repair.**

DRIVEWAY ORDINANCE AND PIPE MAINTENANCE

Title 18, the Town of Goshen Driveway Ordinance concerning the construction of driveways including temporary access driveways on Town roadways. Additionally, this ordinance covers the maintenance of driveways. A permit must be applied for at the office of Public Works prior to the start of construction of a new driveway, or the repaving, re-grading or drainage improvements being performed to an existing driveway if any of the proposed work is to take place in the Town right-of-way. A cash bond will need to be posted by the property owner or contractor performing the work, the bond amount will be calculated at the time of application based upon the probable cost of the work to be performed in the right-of-way. There is no permit fee for a driveway application. Please see Ordinance Title 18 for more information or contact Public Works at 860-491-6029 or by email at publicworks@goshenct.gov with questions or to apply for a permit.

Additionally the ordinance requires that property owners with a cross pipe under their driveway or other drainage system maintain it in a functional condition. Thank you for your cooperation in this important matter.

Coffee-Tea-Etc.com
We roast coffee
Goshen, CT, 860-491-9920
For over 20 years



FRESHLY ROASTED COFFEE
TEAS, HOT CHOCOLATE, GIFT BASKETS







Winter happenings

What an amazing 4 months it has been here in the Recreation Department!! Thank you to everyone that has come to programs, stopped to say hi, and shared their ideas for future programs! Can't wait to continue to offer more programs, trips, and events! I have to send a HUGE thank you to all the people and business that made the annual Halloween party a great success!! You are amazing!

So what is coming up for Recreation programs and events? Let me tell you.

Traditional yoga on Friday mornings from 10:30-11:30am with Crystal at the Parish Hall. Drop in for \$5. Next 8 week session starts January 13th. \$20 for the session.

Chair yoga on Wednesday mornings from 10:30-11:30am with Crystal at the Parish hall. Drop in for \$5. Next 8 week session starts January 11th. \$20 for the session.

Evening yoga on Thursdays from 5pm-6pm with Alyssa at Kobylenski Lodge. Drop in for \$5. Next 8 week session starts January 5th. \$30 for the session.

Adult Hip Hop is underway. Next 8 week session will begin late January. \$180 for the session. Stay tuned for dates and times for the next session.

Mohawk ski/snowboard program sign ups close December 15. Program runs for 6 weeks on Tuesdays at Mohawk Mountain starting January 3rd. Lessons begin at 5pm.

K-6 Basketball Skills with Warren, Morris, Goshen, and Litchfield registration closes December 16th. This 8 week program is held at Wamogo or Litchfield High depending on grade level. \$40 for the session. Saturday mornings beginning January 7th.

Third Thursday Lunch Trip for those 60+ will be December 15 to GW Tavern in Washington. Goshen Community Care sponsors a portion of the cost. Participants pay \$15.

Third Thursday Lunch Trip for January will be on January 19. Destination to be determined. Restaurant suggestions welcome.

Our 60+ bus trip on January 26 will be going to New England Carousel Museum and Museum of Fire History in Bristol with a lunch stop along the way. \$10 for this trip with lunch at your own expense.

Adult Volleyball will be starting on Thursdays January 5-March 23 in the GCS gym from 7pm-9pm. Thanks to our volunteer leader, Mike Prause. Please register and pay in advance at goshenrec.com. Cost is \$20 for the 12 week season.

Ho-Ho-Hotline registration will be available soon to sign up for a phone call from the Jolly Old Elf himself. Have Goshen children been naughty or nice?

A Holiday Party at Kobylenski Lodge will be planned for the weekend of December 17th or 18th. The elves are checking Mr. & Mrs. Clause's schedule. It is a busy time of year for them! Keep an eye out for that date.

I'm planning some Teen Adventure Trips. I'm looking at a trampoline park for January and indoor ropes course in February.

Stay tuned for bus trips to sporting events and family friendly trips.

Suggestions and volunteers are always welcome in the Recreation Department!! Volunteers help make these programs possible and are an asset to our Town Above All Others!!

Erin Reilly
Recreation Director
goshenrec.com



860-491-2249
860-601-6089
parkandrec@goshenct.gov

Goshen Public Library



42B North Street

Goshen, CT 06756

(860)491-3234

Winter 2022-23

www.goshenpublib.org

Library Hours

| | |
|-----------|------------------|
| Monday | 10 a.m. – 6 p.m. |
| Tuesday | 9 a.m. – 6 p.m. |
| Wednesday | 10 a.m. – 6 p.m. |
| Thursday | 9 a.m. – 6 p.m. |
| Friday | 10 a.m. – 6 p.m. |
| Saturday | 9 a.m. – 2 p.m. |

Mark Albertson History Series on Zoom

Monday, January 9, 4:00 PM. **The Chancellor.** This presentation will explain how Hitler did not take power; *it was offered to him!*

Monday, February 6, 4:00 PM. **The Sino-Russian Axis.** Will trace the uneasy relationship between China and Russia, returning to the days of the Soviet Union.

Monday, March 6, 4:00 PM. **Pact of the Devils.** The Nazi-Soviet Nonaggression Pact, August 23-24, 1939. How to leaders, diametrically opposed ideologically, came together for military-strategic convenience.

Writing a Legacy Letter Saturday, January 21 at 10AM

Join us via Zoom for a wonderful workshop with Jay Sherwin! A legacy letter is a written document that captures who you are and what matters most to you. It allows you to reflect on your important life experiences and transmit your values and life lessons to future generations.

Great Decisions 2023

This foreign policy discussion group will start in January and run through 8 meetings based on a book assembled by the Foreign Policy Association: Energy Geopolitics; War Crimes; China and the U.S.; Economic Warfare; Politics in Latin America; Global Famine; Iran at a Crossroads; and Climate Migration.

This is a group that meets at 4PM on alternate weeks from January to April. Dates can be found on the Town calendar. Alternate Mondays starting January 16. These meetings will be via Zoom, with the possibility of having hybrid sessions later in the Spring.

If you would like to be a part of a discussion group but cannot come at 4PM on Mondays, please email director@goshenpublib.org and we will see about a second group.

Twos in the Moon of Wintertime: an Entwined Early Music Holiday. Friday, December 16 at 7PM

To celebrate the Winter season they perform favorite 18th and 19th century carols from around the world such as "What Child is This", "Good King Wenceslas", and "Bring a Torch Jeanette Isabella", tunes that are still beloved and regularly sung and played today.

Please email frontdesk@goshenpublib.org to register.

Children's Programs

Please check the website, Instagram and Facebook for programs. Here are some "Save the Date" listings:

- * Friday December 16, 3:45-4:45pm - Glitter Animal Ornaments (ages 6 and up)
- * Saturday December 17, 10am-2pm- Craft -a -thon! (all ages) Variety of DIY crafts to stay and make or take home to make!

- * Wednesday, December 21, 5-5:45pm Winter Stories and Sing Along (all ages)
- * Tuesday December 27, 1-2pm- Game Day! (ages 5 and up)
- * Wednesday December 28, 2-3pm- Winter Wonderland Dioramas (ages 5 and up) * Friday December 30, 2:30-3:30pm – New Years “Eve” Party (all ages) Crafts, games, and countdown

Outreach

Unable to visit the library? We'll come to you if you are ill or unable to drive. Call 860-491-3234 to arrange outreach services.

Scholastic Flix

All of the following Scholastic Flix can be accessed free online using your Goshen Public Library card!

BookFlix: A unique paired fiction and nonfiction eBook library for Pre-K to grade 3

FreedomFlix: Bringing history to life for grades 4-8

ScienceFlix: Interactive STEM (Science, Technology, Engineering, Mathematics) learning system for grades 4-9

TrueFlix: Multimedia science/social studies resource for grades 3-5

Have you checked out any eBooks or downloadable Audiobooks recently?

Device Advice

Considering many folks receive devices such as tablets or smart phones as holiday gifts, we invite you to visit our website and explore the range of free resources for content. We offer **Libby** by OverDrive (featuring books, audiobooks, *magazines, and movies*), **Hoopla** (featuring audiobooks and movies), and **Kanopy** (featuring movies). Your library card is your key to accessing the vast range of possibilities for education and entertainment. Holiday gifts are wonderful, and Goshen Public Library can enhance the joy they give all year long!

Friends of the Goshen Public Library

Friends Annual Meeting – Friday, December 16 at 7PM (immediately before the holiday concert)

We are so lucky to have a group like the Friends of Goshen Public Library and right now they could use your support. If you can help by giving time to our book sale effort or if you have any ideas that you may have to make us a better library, please come to the Friends meeting the first Tuesday of the month at 5PM or drop some change in the Friends Jar on the circulation desk!

We have a weekly email newsletter that comes out on Wednesday afternoons – please go to our web site and fill in the box asking to be added to the e-newsletter list or contact frontdesk@goshenpublib.org to get signed up for it!

In Recognition of the Bernice & Marilyn Harmon Fund

The Goshen Public Library used \$1500 from the Bernice & Marilyn Harmon Fund to add to our collection. The titles purchased with these funds included both large print and regular print. The Goshen Public Library is very appreciative of this gift to the community. Books purchased with these funds can be noted by the nameplate found in the front of the book

“Looking” for Bats: Acoustic Monitoring for Bats in Connecticut

By Devaughn Fraser and Laura Saucier, CT Department of Environmental Protection, Wildlife Division

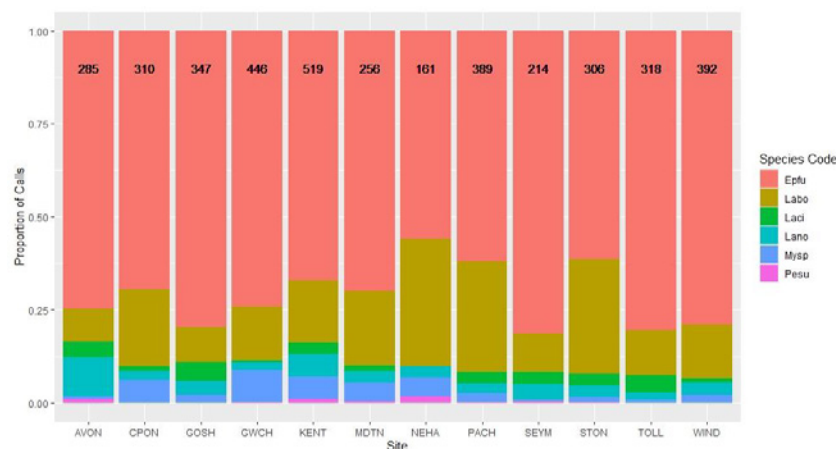
A common misconception about bats is that they are blind because they rely on echolocation to “see”. In fact, bats see color and have fairly good eyesight considering, but these animals have evolved to rely most heavily on echolocation for social communication, navigation, and foraging at night. Bats echolocate by emitting ultrasonic sound pulses from their mouths and then listening to the echo those pulses make. By listening to the echo, bats can determine the size, shape and location of objects while they are in flight. Given that bats are most active at night and fly, they are a notoriously difficult group of animals to study and therefore many questions about their conservation status remain. Connecticut historically was home to nine species of bats. White-nose Syndrome (an introduced fungal disease) has reduced the populations of some of these species by 90% (northern long-eared bat and little brown bat).

Using acoustic monitoring equipment provides an opportunity to eavesdrop on bats so biologists can tell which species are present at a given site, the relative abundance and activity of species across space and time. It is a tool that has revolutionized how bats are studied. The components of this tool includes a microphone, recording device, and software that can analyze and graphically display bat vocalizations allowing biologists to identify which species have been recorded.

Connecticut Department of Energy and Environmental Protection’s Wildlife Division (CT DEEP) uses acoustics to monitor our bat populations state-wide. Biologists use two approaches:

1. Passive detection- a detector is placed at a site and left to record over night for several nights; ideally surveys are repeated annually to detect changes in species presence over time;
2. Mobile detection- a detector is mounted on a vehicle and twenty-mile routes driven at 20 mph, twice per month from May-Oct, at 12 sites across the state; locational coordinates are recorded along the route and timestamps are used to match a bat call to a specific location. This allows biologists to determine the bat species present along a route and compare what habitat features may be influencing their presence.

Figure 1 (below) illustrates the proportions of calls attributed to the six most common bat species of the twelve mobile routes across Connecticut. The third bar of that chart is Goshen’s route, which in 2019 consisted of (from most abundant to least) big brown bat (pink), red bat (olive), hoary bat (green), silver-haired bat (light blue), unknown *Myotis* species (dark blue), and tri-colored bat (purple).



3.

Figure 1 Relative species composition by site (columns) and total number (bold) of manually vetted identifiable bat calls for the 2019 survey season

Different bat species produce vocalizations at different frequencies and patterns. Specialized software was created to recognize these sound characteristics and can preliminarily assign a species identification. There is a lot of overlap and similarity in the call structure of certain species (especially *Myotis* species); this software isn't always 100% accurate so a trained wildlife biologist will manually vet the calls to confirm species identification. Three examples below (Figures 2-4) illustrate a big brown bat (a species that utilizes low frequencies) and a little brown bat and tri-colored bat (both are species that utilize higher frequencies).

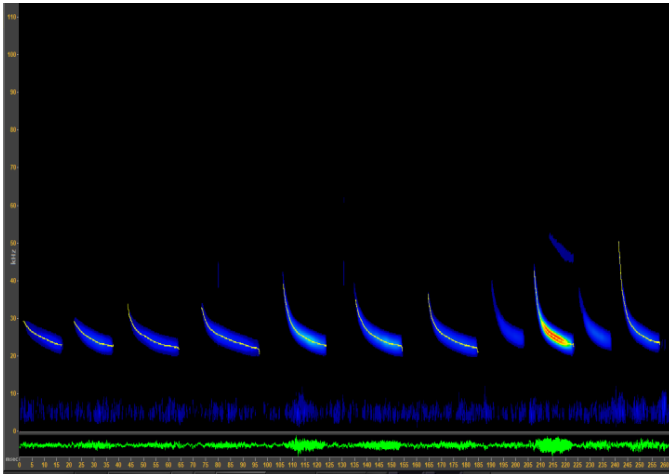


Figure 2. Big brown bat vocalization

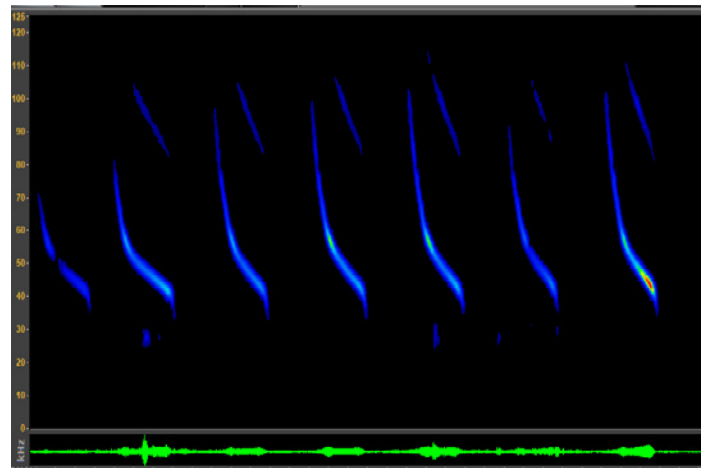


Figure 3. Little brown bat vocalization

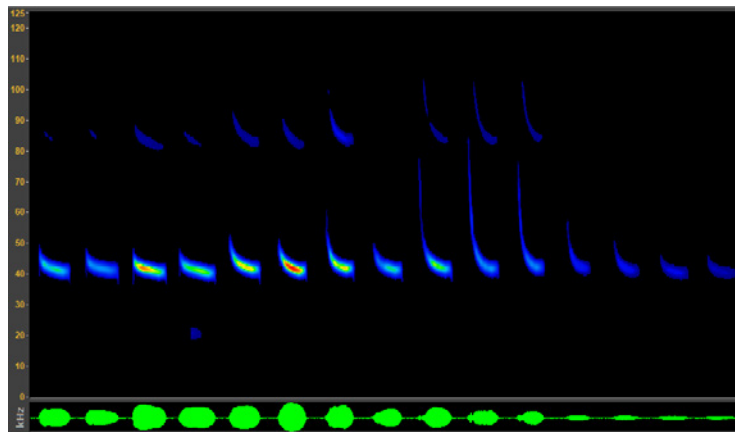


Figure 4. Tri-colored bat vocalization

The data gathered from these acoustic monitoring efforts help CT DEEP 1) understand which bat species may require protection or special consideration during stressful times of the year such as during hibernation or caring for young, 2) document any population recovery after White Nose Syndrome losses, 3) and lead to the rediscovery of the eastern small-footed bat which was thought to be lost from Connecticut. In addition, these data are also contributed to a centralized database to characterize patterns of species detections over time and measure impacts of, and recovery from, White-nose syndrome across North America. More information on these international modeling efforts can be found at <https://sciencebase.usgs.gov/nabat/#/results>.

Broadband Advisory Committee Update

In January 2022, AlticeUSA which owns Optimum announced plans to construct a new fiber optic broadband network in Goshen as well as Cornwall, Morris, Warren, Litchfield, Torrington, Watertown, and Thomaston, which make up the original footprint of the Cablevision of Litchfield franchise. This network would be built alongside its existing hybrid fiber coaxial (HFC) network that Goshen residents largely rely upon today for broadband internet access and video programming. This investment is consistent with the overall corporate objective by AlticeUSA to upgrade much of its legacy network to fiber, adding roughly one million homes per year to its network through 2025 in the NY, NJ & CT areas. This year they've passed an additional 717,000 homes with fiber and spent nearly \$1.4 billion largely on fiber and based on recent evidence it seems they've finally made their way to NW Connecticut having completed southern sections of the state.

During the November BAC meeting, AlticeUSA representative, Esme Lombard, Senior Director of Government Affairs joined in a discussion and provided some updates regarding timing of construction and when Goshen residents should expect marketing information for new services. She explained the region is being overbuilt with bandwidth and Goshen will rely on 3 fiber nodes (cabinets) one of which has been built on East Street North, another located in Cornwall on Great Hill Rd and the 3rd is still being situated. In the event of power outages, these units are supported with battery backup supplemented by mobile generation.



An abundance of fiber construction has been evident during the fall throughout Torrington and Litchfield, and she explained we should anticipate significant activity in our area through the end of the year and into early 2023. Marketing materials are anticipated one month in advance of construction; therefore, watch your mailboxes and be sure to distinguish Optimum Fiber from traditional Optimum marketing materials. Construction crews are expected to begin survey work of underground conduit infrastructure at Woodridge Lake in early December, after which further details will be provided. As detailed at the November meeting, all residents will be required to reach out to Optimum to request new fiber service wherein a technician will bring new equipment and make the new connection. Take note, we advise as an existing customer you call customer retention at **877-936-4778** in order to receive the best rates for service including 12 months of Showtime, free installation and 300 Mbps at \$40/mo., 500 Mbps at \$50/mo., 1Gbps at \$60/mo. including a 2 year price lock. Special rates are in effect now for Torrington residents for Black Friday but new rates for Goshen should be available at the time of launch, possibly around the New Year. Each home will have a new Optical Network Terminal (ONT) installed to replace your existing cable modem as well as a new Wi-Fi router for your home, all installed by an authorized Optimum technician. TV packages can be added on top of this and can be viewed on the website at www.optimum.com. Fiber service is fully symmetrical meaning download speeds are matched by upload speeds, latency is reduced, and bandwidth is not shared with neighbors reducing buffering during peak hours of usage.

It is anticipated Frontier will also be expanding throughout the region in 2023, as it retains a similar fiber only strategy upgrading its former DSL footprint throughout the region. Initial contact has been made and the committee hopes to hear more about their plans over the coming months.

Finally, all Goshen residents should be aware of the **Affordable Connectivity Program (ACP)** which is a federal assistance program for low-income households to help reduce the cost of broadband and mobile services in some cases to zero. The BAC will be providing more information regarding the program on the website and have materials available at town hall.

THRIVING AND GROWING

The **Goshen Green Garden**, sponsored by the Church of Christ Congregational and hosted by the Goshen Agricultural Society had a banner year!

Having experienced flooding and failure in the previous summer, we were ready to take on what this year had in store. What we had was a full garden and a perfect growing season.

Our Garden of Feedin' delivered over 500 lbs. of fresh vegetables to our Goshen seniors and to local food pantries and shelters with the help of many volunteers who planted, weeded, watered, harvested and delivered. And we welcome anyone who would like to join us!

There were some new faces in the garden who found great joy in growing things and in new discoveries, like potatoes growing under ground and massive prize winning Hubbard squash!

The season kicked off with a well attended *Seed Planting Workshop*. During the summer, *How Does My Garden Grow* sessions, were offered in the garden by two UCONN Master Gardener interns, Elaine Zullo and Lynn Fulkerson.

The **Monarch Sanctuary**, begun in 2021, gave us a carpet of blooms, nourishing our senses, the butterflies and all our native pollinators. The pollinators spilled over into the community garden and pollinated the vegetable plants.

The season ended with an all garden work day. The gardeners were joined by folks from the community, including some members of the Vaill family, who came to dig in, rake out and volunteer!

Thank you to all for your continued support.



"The GGG taking a long Winter's Nap."

Notes from the Monarch Sanctuary

Winter is the quiet time at the Sanctuary, but the now dry blooms of summer are still useful. Birds are still feeding on the seed pods. Our native bees are housing in the hollow dry stems from last summer's flowers and many a critter is seeking refuge among the dried grasses. Everything will stay in place until early spring. Then we cut down last year's growth for the new season.

Did you know there are three native species of milkweed in Connecticut?

Butterfly Weed



Swamp Milkweed



Common Milkweed



All three can be found at the Monarch Sanctuary! All three are hostplants to the Monarch Butterfly and can be planted in your personal gardens to help the monarchs.

Milkweeds are best planted from seed. It's a bit tricky but not difficult. The seeds need a good two month of cold stratification, being exposed to the cold and temperature fluctuations of winter.



We cast native seeds directly onto the ground, making good soil contact, in late fall. Then covered the area with a light layer of straw. About 80% sprouted and grew into good healthy plants.

Another successful method used, was to use seed trays or pots, planting two seeds in each, very lightly covered with soil, in late fall or early winter. We then covered the trays with clear plastic wrap to stop the soil from drying and put them out in the garden for the winter. Come mid-March, the trays came inside near a warm window. The plastic was removed when seeds sprouted and the soil kept moist. The young plants were planted in the garden when the soil had warmed, sometime in May.



Do give it a try! If you need help or have questions, contact

goshen98@live.com



Goshen Community Care
Goshen, Connecticut
Interview with Sarah Leonard
June 22, 2022

It was a bright, sunny spring morning when I drove to the home of Sarah Leonard. She greeted me with smile and a bounce to her step. Her son, Reed, a first grader was at her side and together they walked me around her farm – The Gardens on School Hill.

Reed showed me his garden, a 2' by 4' plot with a bright green Basil plant, some flowering plants and a new squash just starting to settle into its well mulched bed. Sarah explained that many of the plants and flowers were brought from her husband's grandmother's home in New Hartford.

As we walked by the raised beds of corn, green beans and broccoli, she shared with me that her goal was to raise enough food to feed her family. In the distance stood peach and apple trees, and below them were strawberry plants and blueberry bushes. Raspberries and grapes added to her delicious assortment. Some of her favorite plants to raise are tomatoes, herbs, peppers, onions and carrots. Together she will make great sauce to go with meatballs and pasta.

She plans to make jam with some and freeze others. With a dehydrator she will store many fruits and herbs. A giant freezer stands in front of her barn. There she also stores meat from her pigs, goats, chickens and sheep.

A concrete cold room for storage is being constructed. Researching the requirements for cold storage was "super exciting". And then there were many zoning regulations for both the cold room and future green house to be completed. With the new green house, her goal is to raise all her plants from seed.

All this and many more steps to homesteading may take 8 – 10 years she says. And it is a shared experience with her family. Her son is learning many life skills as he tends his garden. There is no screen time, no phone or iPad to distract him.

As I sit in my car, ready to leave, I watch her turn to her garden and with excitement in her voice, she says, "now I'm going to remulch the flower bed by the road".

Goshen Community Care and Hospice

Welcome Donna Molon as new Coordinator



As a Goshen resident for 30+ years, I am excited to give back to this community. I have been a member of this organization for 4 years. I am married and have 3 grown children. I own my own Real Estate Company.

Since taking over this position in August, I have had the pleasure of going on field trips with the seniors and meet with them for our weekly socials and monthly luncheons. I have also met with Goshen residents who have needed to borrow medical items from our loan closet. We do so much for our seniors and community residents. I am very fortunate to be part of this!

Light Up A Life

Goshen Community Care and Hospice extends a heartfelt gratitude to all involved with our recent **Light Up A Life** ceremony on December 4! Thank you to all who attended our ceremony, submitted names to our Book of Remembrance or made a gift to support our work.

We extend special appreciation to:

Judi Armstrong

Jeff Celadon

Bill Duquette

GCCH Board & Staff

Goshen Festival Singers

Sr. Rosemarie Greco, DW

Allen Kinsella

Rev. Sara Krhla

Mary Orlando

Susan Strand

Sepples Tree Service

Holly Simpson

Stick It Graphics

Kit Wright



Holiday Ornament Sale

Our Goshen Community Care and Hospice holiday ornaments are back! Ornaments are \$10 each and available for purchase at Goshen Pizza, Milk and Honey Grill, Torrington Savings Bank, Union Bank or by stopping by our office at 5 Old Middle Street. As always, thank you for your support!

Neighbors Helping Neighbors

PO Box 202, Goshen, CT 06756, 860-491-HOPE (4673)

goshencommunitycare@gmail.com, www.goshencc-h.org



The Goshen Good Neighbor Fund, Inc. P.O. Box 492 Goshen, CT 06756

We are grateful for your support....

The Board of Directors wishes to acknowledge with gratitude the donations small and large made by residents and individuals, local businesses, our church communities, grant monies received from local agencies, matching corporate gift programs, regional and state charitable organizations and special event fundraising events sponsored by local individuals, proprietors and civic councils. We are humbled by your ongoing generosity to help ensure perpetuation of our mission to support our neighbors especially during very strenuous and difficult days.

History and Mission

The Goshen Good Neighbor Fund, Inc. was formally established as a nonprofit 501c (3) corporation in 1977 by a group of Goshen Connecticut residents who came together to raise funds for a Goshen family that was experiencing a financial emergency. Through this small group's efforts, fundraising initiatives, and desire to have funds on hand to assist other residents of Goshen who might find themselves in similar financial emergency circumstances, **The Goshen Good Neighbor Fund, Inc. (GGNF)** has been perpetuated since that time.

Peace and Comfort to All this Holiday Season....

Marcia Barker, 860-491-2368

Sue Breakell, Secretary 860-307-0611

Erin Hubbard, Vice President 860-491-2176

Allen Kinsella, 860-491-3720

Dan Kobylenski, 860-491-0101

Andrea Loomis, 860-806-1887

Cate Corwin, Treasurer, Email: goshengoodneighborfund@gmail.com

Laurie Sweet, 860-307-9462

Lisa Tillmann, 860-491-5472

Julia Turtoro, 860-309-7506

Art Witkowski 860-491-3350

Kit Wright, President 860-491-2419

Lu-Ann Zbinden, 860-491-3399

Please note: Gifts to The Goshen Good Neighbor Fund are tax deductible based on the Fund's 501 c 3 Public charity status. No exchange of goods, services or property is provided by The Goshen Good Neighbor Fund, Inc. in relation to charitable gifts.

2023 GOSHEN, CONNECTICUT CALENDAR

SPONSORED BY THE
GOSHEN GOOD NEIGHBOR FUND, INC.



***The Perfect Holiday Gift for
Family & Friends***

\$12

AVAILABLE AT

GOSHEN PUBLIC LIBRARY

AND

GOSHEN WINE & SPIRITS

2023 Cover Photo submitted by Andy Nygren of Goshen

Net proceeds from the sale of these calendars directly assist
Goshen neighbors in need.



If you have reusable clothing items, shoes and textiles that are no longer being used, please consider placing bagged items in the **Clothing Shed** located on the grounds of Saint Thomas of Villanova on North Street. All proceeds realized from the Saint Thomas of Villanova clothing shed are graciously donated to the Goshen Good Neighbor Fund Inc. We are appreciative to the St. Louis de Montfort Parish /Saint Thomas of Villanova community for this incredible and ongoing support.



TROOP 35 GOSHEN, CT. BSA

Wow! What a busy year we had. In May we held our steak dinner fund raiser at the Goshen Fair Grounds. It was a great turn out- we are working to make it better in 2023. So spread the word! Hopefully it will be another great night-warm with a beautiful sunset. Come and enjoy a meal, music and friends. Our boys had an experience of a lifetime- hiking in the mountains of New Mexico this summer. They also took a train to the top of Pikes Peak in Colorado, did some white water rafting and walked across the Royal Gorge Bridge in Colorado. Made possible by everyone that supported our fundraisers. THANK YOU!.

Our boys also went to summer camp at Camp Matatuck. It was a fun time, they earned badges, went swimming , made new friends and came in first place in a cardboard boat race. They had to build the boat, get in and paddle it across the pond.

The Goshen Fair was also a great success, we have our Boy scout booth where we sell egg sandwiches, grilled cheese , meatball sandwiches, drinks. We Thank you! Trips of a lifetime for these boys cost a lot. We are planning a trip for the summer of 2024 to go to a boy scout island off the tip of Key West in Florida. Fishing, paddling and snorkeling are some of the activities we will be doing.

We just had our Beast Feast held at the YMCA camp in Salisbury. The scouts show off their cooking skills and cook all weekend . The boys make the menu and cook and eat. It's great-the boys have to cook for us adults!.No One leaves hungry.

Life scout Hudson Sebranek is working on a project for the Sharon Audubon Society . He will be building walkways and a bridge on a trail for his Eagle scout project.

On November 12th the Boy scouts held our Thank you -pasta dinner for the veterans. We had a good turn out, but next year we want a great turn out. Please keep an eye out for next year details. Tell and bring all veterans-It's free. It's a little something to say Thank You for all you do and all you've done.

One of the service projects that we did was help plant flower bulbs at the Cornwall Library. Can't wait to see them in full bloom next summer.

A year can not go by without thanking Mark at AJ's restaurant for all they do to help our troop. From donating food or selling to us at cost. His generosity is greatly appreciated . Stop in and have a beer or grab a meal and tell them thanks for supporting the scouts.

Our Meetings are on Wednesday evenings. If you are interested in seeing what scouting has to offer, please stop by Camp Coch at 7:00 pm or talk to any scout or parent.

GOSHEN HISTORICAL SOCIETY

MEMBERSHIP DRIVE



PURPOSE

To discover, procure, and preserve whatever may relate to civil military, literary and ecclesiastical history and biography in general, and especially with reference to the TOWN OF GOSHEN; to investigate and preserve such traditions as now exist only in memory of aged persons, to procure and maintain collections in archaeology, art and the natural history of GOSHEN and the surrounding country, and in general, to encourage study, research, particularly that relating to local history, biography, antiquities and natural history and to disseminate information relative thereto.

Permanent exhibits include, furniture, glass, china, pewter, paintings, quilts, Indian artifacts minerals, shells, Lucas ledgers, and items pertaining to Goshen's early industries.

Programs which are open to the public cover a wide variety of topics of historical interest and are planned each season from June throughout August. The museum is normally open April to October and in 2022 we had two programs. An open house in July and a program by J. Thomas Allison, America's Most Historic Mile, North & South St. Litchfield in August. Both events were well attended.

Our events this coming year will help repair the copula and other needed repairs to the building. GIVE LOCAL also helps with is annual program which is held every April/May which we participate each year.

WE WISH TO THANK ALL OF OUR SUPPORTERS FOR ENABLING US TO KEEP THE BUILDING OPEN and TO CONTINUE OUR VARIOUS PROJECTS THIS YEAR.

We had new stairs installed to the second floor outside the building was done with fund donated by the estate of George Schuster, a new paver walk installed to the front door and to the upper outside stairs in memory of Walter Horvay.

+++++

APPLICATION

NAME _____

ADDRESS _____

CITY, STATE, ZIP _____

E-MAIL _____

SUSTAINING MEMBER DONATION \$25.00/ PER YEAR

MAIL TO:

GOSHEN HISTORICAL SOCIETY

P.O. BOX 457

GOSHEN, CT 06756

WE NEED

YOUR SUPPORT

and MEMBERSHIP

OPEN in 2023



ENJOY MORE TIME AND SAVINGS FOR THE LITTLE THINGS

- Automobile insurance
- Home insurance
- Life insurance



Robert Layer

Your Local Agent
59 TORRINGTON RD
GOSHEN, CT 06756
RLAYER@FARMERSAGENT.COM



Quote Now

Wishing our neighbors a very Happy Holiday and New Year

Restrictions apply. Discounts may vary. Not available in all states. See your agent for details. Insurance is underwritten by Farmers Insurance Exchange and other affiliated insurance companies. Visit farmers.com for a complete listing of companies. Not all insurers are authorized to provide insurance in all states. Coverage is not available in all states. Life Insurance issued by Farmers New World Life Insurance Company, 3120 139th Ave. SE, Ste. 300, Bellevue, WA 98005.





DIAMOND CREEK LLC

DIAMOND CREEK PET RETREAT & THE CANINE SPORTS CENTER

(860) 491-3904 Goshen, CT 416 Old Middle Street (Route 63)

GOSHEN'S PREMIER PET FACILITY

Schedule a
tour and get a
free night stay
coupon!



Follow us on
facebook and
Instagram!



- ✓ Pet Accommodations
- ✓ Doggie Daycare
- ✓ Group Obedience Classes
- ✓ Private Training
- ✓ Behavioral Consults
- ✓ Grooming Salon



& more



****Always Free Gift Wrapping, Case discounts (State Min pricing Applies)**



WE'VE EXPANDED COME SEE THE NEW SPACE!

December Sales

Pricing Subject to Small Monthly Change*

The Holidays are here! Thank you all for another great year for our little shop. As we wrap up this busy season please keep us in mind for your any of your wine, spirits or beer needs!

With the exception of scotch, most inventory issues have stabilized or improved this fall. If you're looking for specific items just give us a ring to check in on availability.

We've started weekly tastings in the new expansion space, we would love to see people come and talk about wine, hopefully adding something special to your shopping experience. There is still shelf space waiting to be filled with customer requests!

Happy Holidays! Drink & Be Merry

- Greg Brick Jr -
Proprietor

SPIRITS

- Tito's 1.75L \$31.99 & 750s' 19.99
- ABSOLUT 1.75 LAST MONTH @ \$29.99
- Cuervo 1.75L \$39.99
- Bombay Sapphire 1.75L \$35.99
- Grey Goose 1.75- \$47.99
- Tanqueray 1.75 \$32.99
- Jack Daniels 1.75L \$45.99
- Baileys 1.75 \$49.99, & 750s \$29.99
- Many more spirits @ State Min Pricing!

WINE

- Bota 3L \$19.99- Black Box 3L \$19.99
- 90+ Reds- \$9.99
- Mionetto Prosecco \$14.99 & La marca \$15.99
- Juggernaut Cab & Pinot \$19.99
- Bogle Cab & Chard \$9.99
- Cavit PG 1.5L \$11.99
- Woodbridge 1.5L \$11.99
- Apothic Wines \$10.99
- Kim Crawford SB \$14.99
- Oyster Bay SB \$11.99
- Lan Rioja \$14.99
- Santa Margherita PG \$23.99
- Caymys Cabernet \$79.99
- Meiome Pinot Noir \$ 19.99
- Zaccagnini Wines \$16.99
- Carpineto Chianti Classico \$18.99
- Josh Wines All @ State Min
- Local Wine, High End Selections, Value Wines All Available!

Free Delivery!!!

**Please Call ahead
for weekend orders**

Bubbles (while supplies last)

Moet & Chandon 750- \$53.99

Veuve Clicquot 750 \$57.99 Rose \$67.99

Lanson \$49.99, Roederer Estate \$29.99

Korbel \$14.99, Chandon \$18.99

December Super Sale

Josh Cabernet Sauvignon

\$11.69 All MONTH!

10% Below State Min Pricing

Some Special Rebates Available

Tastings this month! In the new room!!

December 2nd, 16th, 23rd, 30th

Follow us on Facebook for weekly updates



860-491-2078 Goshenwine.org

Goshenwineandspirits@gmail.com

9:30-8

Sundays 10:30-5

9 to 6 Christmas Eve Closed Christmas & New Years Day



LaPLACA

OIL & PROPANE

"Keeping Litchfield County Warm Since 1982"

24 Hour Emergency Full Service

- *Very Competitive Prices* •
- *Volume Discounts* •
- *All Size Propane Tanks Available* •
- *Above & Underground Propane Tanks* •
- *Automatic Delivery* •
- *Boiler & Furnace Installations* •
- *Electric Heat Conversions* •
- *Licensed Technicians* •

498 North Street, Goshen, CT 06756
Ph.: 860.491.3737 • Fax: 860.491.3858
laplacaoilandpropane@gmail.com
www.laplacaoilandpropane.com

Recycling and Trash Street List

| MONDAY PICKUP | |
|------------------------|---------------------|
| Allenby Court | Ives Road |
| Ashley Dr. | Kubish Road |
| Beach Street | Lucas Road |
| Belshyre Court | Marshepaug Road |
| Benjamin Court-Private | Milton Road |
| Benjamin Lane-Private | Newcomb Road |
| Bentley Circle | Paxton Court |
| Bexley Court | Pond Ridge Dr. |
| Birchwood Lane | Redwood Court |
| Brynmoor Court | Rockwall Court |
| Brynmoor Drive | Seeley Road |
| Bueford Court | Shearshop Road |
| Canterbury Court | Shelbourne Court |
| Chatham Court | Shelbourne Drive |
| Cornwall Drive | Sherbrook Drive |
| Crossman Road | Squire Court |
| Deer Run Lane | Sutton Court |
| Dresden Circle | Town Hill Road |
| Dresden Court East | Valcove Court |
| Dresden Court West | Weldon Court |
| East Cornwall Road | Wellsford Drive |
| East Hyerdale Drive | West Hyerdale Drive |
| Eli Bunker Road | Woodale Court |
| Equestrian Drive | Wynwood Court |
| Hyerdale Court | |

| TUESDAY PICKUP | | |
|----------------------|--------------------------|-----------------------------|
| Allyn Road | Hall Meadow Rd | Stonebridge Lane |
| Apley Road | Hemlock Hill Road | Sucker Brook Rd. |
| Bare Hill Road | Hillhouse R | Sunset Drive |
| Bartholomew Hill Rd | Hilltop | Sunset Ridge Rd. |
| Beech Hill Rd | Holmes | Tamarack Lane |
| Beecher Road | Howe | Thompson Road |
| Blackland Road | Ivy Mountain Rd. | Torrington Road |
| Breguet Rd. | Jakes | Turkey Hollow La. |
| Bruno Rd. | Kimberly | Tyler Lake Heights |
| Brush Hill Road | Lake Shore Drive | Tyler Lake Hgts Ext. |
| Center Rd. | Laurel Hill Lane-Private | Tyler Ridge Dr. |
| Cottage Grove Rd. | Lyman | Village Market Place |
| Craig Lane-Private | Meadowcrest North | West Side Road |
| Davidson Road | Meadowcrest South | West Street |
| Deming Road | Mill | Whispering Pines Rd-Private |
| East St. North | North Goshen Rd | Whist Pond Road |
| East St. South | North | Winchester Road |
| Elementary Drive | Old Middle | |
| Five & Half Mile Rd. | Park | |
| Flora Road | Pie Hill | |
| Four Winds Rd. | Reservoir Road | |
| Gray Lane | Rock House Rd. | |
| Griswold Rd.-Private | Sandy Beach Rd. | |
| Griswold Rd.-Private | School Hill | |
| Hageman Shean Rd. | Sharon Turnpike | |

DON'T LET YOUR RECYCLING EFFORTS GO TO WASTE.

Recycling right is one small, simple step you can take to help your community and the planet.

Doing your part starts by learning **What's IN** and **What's OUT** of your bin. It's the best way to ensure recyclable items don't end up in the trash and non-recyclable items don't cause contamination or hazards.

Recycling right helps to:

- Conserve natural resources
- Burn less waste
- Provide raw materials to manufacturers
- Keep our recycling workers safe

We'll help you sort it out - go to www.recyclect.com your guide to recycling right.



Town of Goshen 2023 Residential Recycling Pickup Schedule

April 22, 2023 - Earth Day Townwide Cleanup

| January | | | | | | |
|---------|----|----|----|----|----|----|
| S | M | T | W | T | F | S |
| | | | | | | |
| 1 | 2 | 3 | 4 | 5 | 6 | 7 |
| 8 | 9 | 10 | 11 | 12 | 13 | 14 |
| 15 | 16 | 17 | 18 | 19 | 20 | 21 |
| 22 | 23 | 24 | 25 | 26 | 27 | 28 |
| 29 | 30 | 31 | | | | |

| February | | | | | | |
|----------|----|----|----|----|----|----|
| S | M | T | W | T | F | S |
| | | | 1 | 2 | 3 | 4 |
| 5 | 6 | 7 | 8 | 9 | 10 | 11 |
| 12 | 13 | 14 | 15 | 16 | 17 | 18 |
| 19 | 20 | 21 | 22 | 23 | 24 | 25 |
| 26 | 27 | 28 | | | | |

| March | | | | | | |
|-------|----|----|----|----|----|----|
| S | M | T | W | T | F | S |
| | | | 1 | 2 | 3 | 4 |
| 5 | 6 | 7 | 8 | 9 | 10 | 11 |
| 12 | 13 | 14 | 15 | 16 | 17 | 18 |
| 19 | 20 | 21 | 22 | 23 | 24 | 25 |
| 26 | 27 | 28 | 29 | 30 | 31 | |

| April | | | | | | |
|-------|----|----|----|----|----|----|
| S | M | T | W | T | F | S |
| | | | | | | 1 |
| 2 | 3 | 4 | 5 | 6 | 7 | 8 |
| 9 | 10 | 11 | 12 | 13 | 14 | 15 |
| 16 | 17 | 18 | 19 | 20 | 21 | 22 |
| 23 | 24 | 25 | 26 | 27 | 28 | 29 |
| 30 | | | | | | |

| May | | | | | | |
|-----|----|----|----|----|----|----|
| S | M | T | W | T | F | S |
| | 1 | 2 | 3 | 4 | 5 | 6 |
| 7 | 8 | 9 | 10 | 11 | 12 | 13 |
| 14 | 15 | 16 | 17 | 18 | 19 | 20 |
| 21 | 22 | 23 | 24 | 25 | 26 | 27 |
| 28 | 29 | 30 | 31 | | | |

| June | | | | | | |
|------|----|----|----|----|----|----|
| S | M | T | W | T | F | S |
| | | | | 1 | 2 | 3 |
| 4 | 5 | 6 | 7 | 8 | 9 | 10 |
| 11 | 12 | 13 | 14 | 15 | 16 | 17 |
| 18 | 19 | 20 | 21 | 22 | 23 | 24 |
| 25 | 26 | 27 | 28 | 29 | 30 | |

| July | | | | | | |
|------|----|----|----|----|----|----|
| S | M | T | W | T | F | S |
| | | | | | | 1 |
| 2 | 3 | 4 | 5 | 6 | 7 | 8 |
| 9 | 10 | 11 | 12 | 13 | 14 | 15 |
| 16 | 17 | 18 | 19 | 20 | 21 | 22 |
| 23 | 24 | 25 | 26 | 27 | 28 | 29 |
| 30 | 31 | | | | | |

| August | | | | | | |
|--------|----|----|----|----|----|----|
| S | M | T | W | T | F | S |
| | | 1 | 2 | 3 | 4 | 5 |
| 6 | 7 | 8 | 9 | 10 | 11 | 12 |
| 13 | 14 | 15 | 16 | 17 | 18 | 19 |
| 20 | 21 | 22 | 23 | 24 | 25 | 26 |
| 27 | 28 | 29 | 30 | 31 | | |

| September | | | | | | |
|-----------|----|----|----|----|----|----|
| S | M | T | W | T | F | S |
| | | | | | 1 | 2 |
| 3 | 4 | 5 | 6 | 7 | 8 | 9 |
| 10 | 11 | 12 | 13 | 14 | 15 | 16 |
| 17 | 18 | 19 | 20 | 21 | 22 | 23 |
| 24 | 25 | 26 | 27 | 28 | 29 | 30 |

| October | | | | | | |
|---------|----|----|----|----|----|----|
| S | M | T | W | T | F | S |
| 1 | 2 | 3 | 4 | 5 | 6 | 7 |
| 8 | 9 | 10 | 11 | 12 | 13 | 14 |
| 15 | 16 | 17 | 18 | 19 | 20 | 21 |
| 22 | 23 | 24 | 25 | 26 | 27 | 28 |
| 29 | 30 | 31 | | | | |

| November | | | | | | |
|----------|----|----|----|----|----|----|
| S | M | T | W | T | F | S |
| | | | 1 | 2 | 3 | 4 |
| 5 | 6 | 7 | 8 | 9 | 10 | 11 |
| 12 | 13 | 14 | 15 | 16 | 17 | 18 |
| 19 | 20 | 21 | 22 | 23 | 24 | 25 |
| 26 | 27 | 28 | 29 | 30 | | |

| December | | | | | | |
|----------|----|----|----|----|----|----|
| S | M | T | W | T | F | S |
| | | | | | 1 | 2 |
| 3 | 4 | 5 | 6 | 7 | 8 | 9 |
| 10 | 11 | 12 | 13 | 14 | 15 | 16 |
| 17 | 18 | 19 | 20 | 21 | 22 | 23 |
| 24 | 25 | 26 | 27 | 28 | 29 | 30 |
| 31 | | | | | | |

MONDAY PICKUP

TUESDAY PICKUP

Recycling Events
Electronics, Shredding
Mattress & Boxsprings
April 1 and Oct 7
Town Hall

FIRST FRIDAY Free Pickup

Tires, Metal & Appliances
You must schedule a pickup

Call USA 860 379-1662

Refrigerator or Dehumidifier
See Fiscal Office in Town Hall
for a Sticker

Household Harzardous Waste

See goshenct.gov for dates

Pick up questions?

Call USA Recycling & Hauling
860 379-1662

USA Recycling Holiday

Basic Guidelines: All items should be empty, rinsed, clean and open. Do not shred, box, bag or bundle.

| PAPER | |
|-------------------------|-------------------------------|
| Cardboard & boxboard | Magazines & newspaper inserts |
| Food & beverage cartons | Newsprint |
| Junk mail | Office paper |
| | Pizza boxes |

| GLASS |
|-------------------------|
| Beverage bottles & jars |
| Food bottles & jars |

| METAL | |
|--------------------------------------|--------------------------------|
| Aerosol containers (food grade only) | Cans & bottles |
| Aluminum foil | Foil containers |
| | Metal lids from cans & bottles |

| PLASTIC | |
|---|---|
| Plastic bottles (with or without caps attached) | Plastic one-use cups (no lids, no straws) |
| Plastic containers, tubs & lids | |

| | |
|-------------------------|--------------------------|
| Gift wrap & gift bags | Shredded paper |
| Ice cream containers | Take-out food containers |
| Paper cups (hot & cold) | Tissue paper |

| |
|-----------------------|
| Ceramic mugs & plates |
| Drinking glasses |

| | |
|---|-----------------------------|
| Aerosol containers (cleaners, pesticides, etc.) | Paint cans |
| Foil tops from yogurt containers | Pots & pans |
| | Small pieces of scrap metal |
| | Spiral wound containers |

| | |
|----------------------------------|------------------------------|
| Loose bottle caps | Single-use coffee containers |
| Plastic bags & wrap | Styrofoam cups & containers |
| Plastic plates, bowls & utensils | Water filters |
| Prescription bottles | |

To learn more, go to RecycleCT.com



TOWN PHONE DIRECTORY

To reach an extension, call the number listed below. You will be asked to dial the extension listed below. If the person you are calling is unable to answer their phone, you will be able to leave message in the individual's voice mail.

| NAME | TITLE | PHONE | EXT | HOURS |
|---------------------------|-------------------------------|----------------------------------|-----|--|
| Breor, Barbara | Town Clerk | (860) 491-3647 | | Mon-Thurs 9-12 & 1-4 & Fri 9-1 |
| Carusillo, Todd | First Selectman | (860) 491-2308 | 221 | Mon-Thurs 8:30-4 & Fri 8:30-12 |
| Carusillo, Kim | Asst. Town Clerk | (860) 491-3647 | 225 | Mon-Thurs 9-12 & 1-4 & Fri 9-1 |
| Clinton, Lori | Registrar of Voters | (860) 491-2308 | 236 | 1 st & 3 rd Tues 9-Noon |
| Collins, Paul | Recycling Coordinator | (860) 618-5468 | | Mon-Friday by appointment |
| Connor, Marty | Enforcement Officer | (860) 491-2308 | 232 | Tues & Thurs 7:30-10 |
| Desimone, Renee | Library Children Coordinator | (860) 491-3234 | | Library Phone Number |
| Diorio, Bob | Fire Marshal | (860) 601-8940 | | Cell Phone (No Office Hours) |
| Graham, Kate | Animal Control Officer | (860) 248-9979 | | Cell Phone (No Office Hours) |
| Gregoire, Paula | Library Aide | (860) 491-3234 | | Library Phone Number |
| Hall, Robert | Fire Chief | (860) 491-2526 | | No Office Hours |
| Harlow, Garret | Public Works Supervisor | (860) 491-6029 | | Mon-Fri 7:00 – 3:00 |
| Harris, Mark | Selectman | (860) 491-9095 | | Home Number |
| Howard, Nanci | Registrar of Voters | (860) 491-2308 | 236 | 1 st & 3 rd Tues 9-Noon |
| Hussman, Lucy | Assessor | (860) 491-2115 | | Tues & Wed 9-12 & 1-4 |
| Jurchert Derungs, Rebecca | Tax Collector | (860) 491-3275 | | Tues 9-12 & Wed 1-4 |
| Kinsella, Dexter | Selectman | (860) 91-3364 | | Home Number |
| Lamanna, Maureen | Asst. Tax Collector | (860) 491-3275 | | Tues 9-12 & Wed 1-4 |
| Lavin, Cinzia | Library Aide | (860) 491-3234 | | Library Phone Number |
| LeClair, Denise | Assessment Clerk | (860) 491-2115 | | Tues & Wed 9-12 & 1-4 |
| Malahan, Jack | Deputy Animal Control Officer | (860) 480-3210 | | Cell Phone (No Office Hours) |
| Malanca, Kate | Data Entry Clerk | (860) 491-2308 | 223 | Mon & Tues 8:30 - 4 |
| Malanca, Kate | Library Aide | (860) 491-3234 | | Library Phone Number |
| Paige, Lucille | First Selectman Aide | (860) 491-2308 | 239 | Tues, Wed & Thurs |
| Perry, Virginia | First Selectman Admin. Asst. | (860) 491-2308 | 228 | Mon-Thurs 8:30 – 4 & Fri 8:30 - 12 |
| | | | | |
| Reilly, Erin | Recreation Director | (860) 491-2249 (860) 601-6089 | | Mon-Wed 9-4, Thurs/Fri for programs/Field Trip |
| Steinmayer, Lynn | Library Director | (860) 491-3234 | | Library Phone Number |
| Zibell, Chris | Building Official | (860) 491-2308 | 231 | Tues & Thurs 7:30-10 |

OTHER PHONE NUMBERS (OWNED BY TOWN)

| | | | | |
|---------------------|---------------------|-----------------------|--|--------------------------------|
| Goshen Fire Company | 181 Sharon Turnpike | (860) 491 - 2526 | | (860) 491-3855 (General Calls) |
| Goshen Library Fax | 42B North Street | (860) 491-0100 | | |
| Public Works | 38 Torrington Road | (860) 491-6029 Office | | (860) 491-6036 Fax |
| Town Hall Fax | 42A North Street | (860) 491-6028 | | |

OTHER PHONE NUMBERS (NOT OWNED BY TOWN)

| | | | | |
|-------------------------|-----------------------------|----------------|--|--|
| Goshen Community Care | 5 Old Middle Street | (860) 491-4673 | | |
| Goshen Fairgrounds | 116 Old Middle Street | (860) 491-3655 | | |
| Goshen Post Office | 9 Sunset Drive | (860) 491-2733 | | |
| State Police Troop B | 463 Ashley Falls Rd, Canaan | (800) 497-0403 | | |
| U.S.A Hauling Recycling | 185 Torrington Rd, Winsted | (860) 379-1662 | | |



Town of Goshen
42A North Street
Goshen, CT 06756

"Presorted Standard"
U.S. Postage Paid
Permit No 350
Torrington, CT 06790
CR RT PRE-ST

Postal Patron
Goshen, CT 06756